

Motor Vehicle Catalogue

Issued by:
Automotive Plant & Transport
Section, Headquarters



Telecom Australia

AUTOMOTIVE PLANT — VICTORIA

FOREWORD

The provision and maintenance of Australia's telecommunication system requires the use of a large fleet of motor vehicles of many different types. Currently there are over 24,000 vehicles in the fleet, ranging from small sedans through the sedan, sedan derivatives, light commercial and rigid truck ranges to heavy duty semi-trailers and low loaders.

This catalogue illustrates and provides some technical data concerning the various types of vehicles in our fleet. It has been prepared so that staff may be aware of all the types and thus may contribute to the selection of the most suitable ones, having in mind the operational and geographical conditions as well as the commercial factors and the need to conserve natural resources, particularly liquid fuels. There are of course, features of vehicle design which are in conflict in some cases; for example, a panel van high enough for easy access to the interior is too high for easy handling of roof mounted ladders. Vehicle choice of necessity often involves some degree of compromise.

Because of problems met in buying several thousand vehicles each year in a wide range of types, it is necessary to rationalise the types to those shown in this catalogue. However, while the range must be restricted to those shown wherever possible, it is not intended to exclude other types where special conditions prevail and where it could be shown that the standard range would be inadequate.

Apart from the vehicles themselves, the way in which they are fitted out plays an important part in staff achieving operational satisfaction with their vehicles. Fittings for vehicles are constantly under review and from time to time representative user areas will be requested to assist in revising current layouts and in developing new ones.

The photographs which have been reproduced in the catalogue illustrate vehicles currently in operation. This does not mean that replacement vehicles will be of the same make and model, rather that the specific features of the vehicle type will be retained regardless of the make and model purchased.

The catalogue has been prepared in loose leaf form to facilitate updating as new types are added to the range, or existing ones deleted, in keeping with developments in both the automotive and telecommunication industries.

As vehicles play such an important role in our telecommunication activities, it is believed this catalogue will be of significant help to field staff.



G.R. Smith
Supervising Engineer

EXPLANATORY NOTES

Vehicle Grouping

The vehicles which Telecom purchases divide into four groups which are supported by different sections of the automotive industry. These groups are shown as separate sections in this catalogue, namely:

Section 1 — Sedans and sedan derivatives (station wagons, utilities and panel vans)

Section 2 — Light commercial utilities and panel vans

Section 3 — Rigid Trucks

Section 4 — Prime movers and semi-trailers

Vehicle Type Code

To facilitate identification, each vehicle type has been given its own code which should be used when it is necessary to identify a vehicle type, for example, in telex messages, correspondence, discussion, etc. The type code for each vehicle in the catalogue, grouped into the respective sections, is as listed below:

Section 1:

SS	Sedan, small
SM	Sedan, medium
SL	Sedan, large
WS	Wagon, small
WM	Wagon, medium
WMF	Wagon, medium four wheel drive
WL	Wagon, large
U0.6	Utility 600 kg load capacity
PV0.6	Panel van, 600 kg load capacity

Section 2:

UJ0.8	Utility, jointers 800 kg load capacity
TC1	Truck cartage 1 tonne load capacity
PV0.7	Panel van, 700 kg load capacity
PVJ0.8	Panel van, jointers 800 kg load capacity
PV1	Panel van, 1 tonne load capacity
PV1.5	Panel van, 1.5 tonne load capacity
BUS12	Bus, 12 Passenger
BUS20	Bus, 20 Passenger
TCF0.7	Truck cartage 700 kg load capacity four wheel drive
TCF1	Truck cartage 1 tonne load capacity four wheel drive
PVF1	Panel van 1 tonne load capacity four wheel drive
WLF	Wagon large four wheel drive

Explanatory Notes (Cont.)

Section 3:

TC1.5	Truck, cartage, 1.5 tonne load capacity
TC3	Truck, cartage, 3 tonne load capacity
TC5	Truck, cartage, 5 tonne load capacity
TC7.5	Truck, cartage, 7.5 tonne load capacity
TC12	Truck, cartage, 12 tonne load capacity
TCF6	Truck, cartage, 6 tonne load capacity 4 wheel drive
TL1.5	Truck, line, 1.5 tonne load capacity
TL3	Truck, line, 3 tonne load capacity
TP3	Truck, line party, 3 tonne load capacity double cab
TLP3	Truck, pipe & pit 3 tonne load capacity
TPP3	Truck, pipe & pit 3 tonne load capacity double cabin
TT2	Truck, tip, 2 tonne load capacity
TT5	Truck, tip, 5 tonne load capacity
TT7	Truck, tip, 7 tonne load capacity
TT10	Truck, tip, 10 tonne load capacity
TTF6	Truck, tip, 6 tonne load capacity 4 wheel drive
TV2	Test Van, 2 tonne load capacity

Section 4:

TUT12	Tractor unit and tray platform semi-trailer 12 tonne load capacity
TUT17/20	Tractor unit and tray platform semi-trailer 17/20 load capacity
TUL15	Tractor unit and low load semi-trailer 15 tonne load capacity
TUL30	Tractor unit and low load semi-trailer 30 tonne load capacity

Towing Capacities

When a vehicle is used for towing, the static load on the drawbar becomes part of the load being carried. The total load must not exceed the gross mass shown on the vehicle.

The capacity of a fully laden vehicle to tow a trailer can be readily ascertained by calculating the difference between the Gross Vehicle Mass (G.V.M.) and the Gross Combination Mass (G.C.M.) shown on the vehicle compliance plate.

The above method has been used to calculate the maximum gross trailer mass as listed in this catalogue. Additional restrictions on towing capacity may be applied by State road laws. These laws must be observed by Telecom drivers.

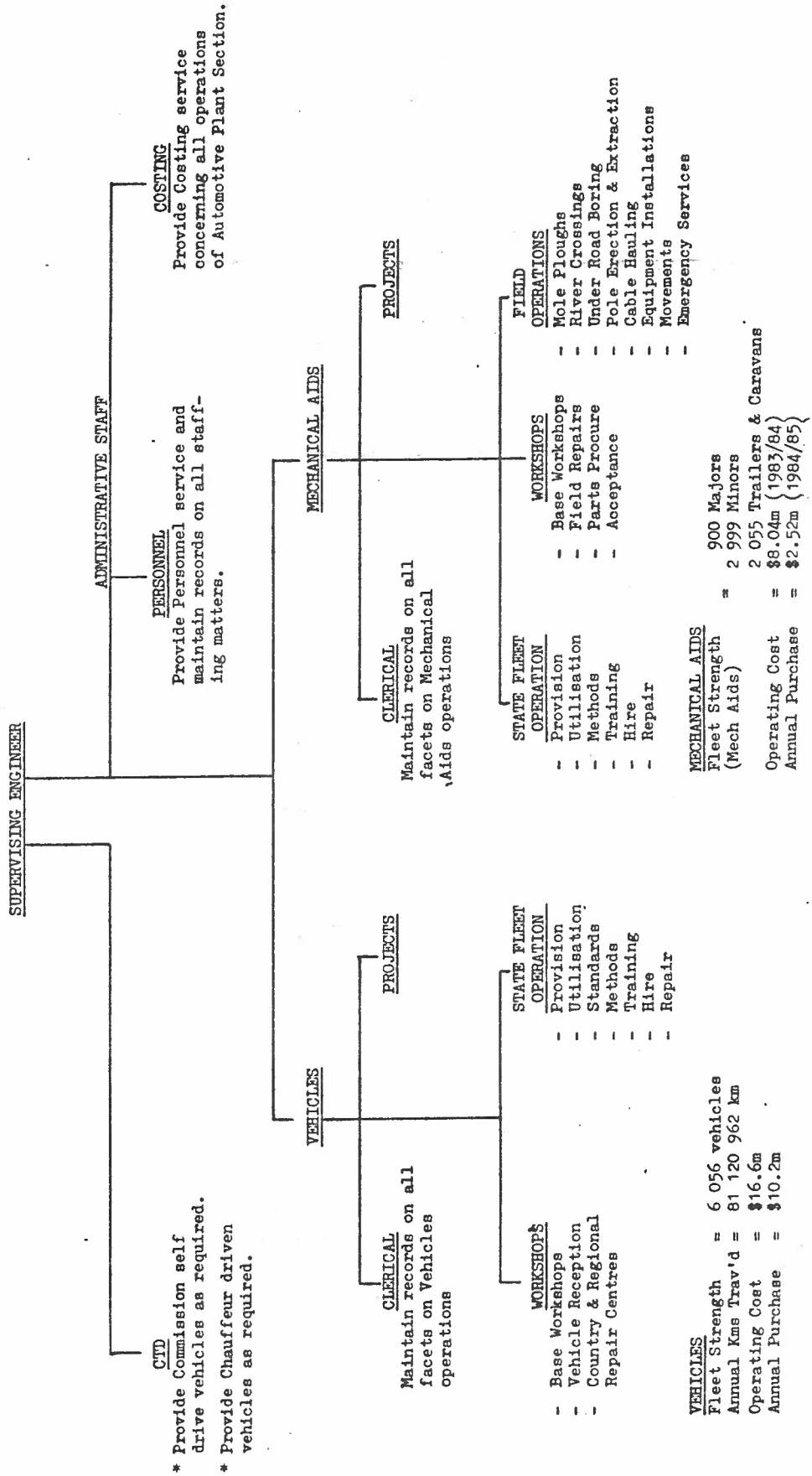
AUTOMOTIVE PLANT SECTION

AUGUST 1984

OBJECTIVE

To cater for Telecom's needs for motor vehicles, mechanical aids, trailers, caravans and allied equipment by integrating the provision, utilisation and maintenance of this equipment in a manner aimed at achieving maximum productivity at field level. Also provide self drive and chauffeur driven vehicles to Telecom.

ORGANISATION Total Staff : 366



DRIVERS LICENCE REQUIREMENTS

Section 3 Motor Car Act 1958 as amended "Motor car" or "car" means any vehicle propelled by internal combustion steam gas oil electricity or any other power and used or intended for use on any highway and includes an articulated motor car a motor cycle and a motor tractor; but does not include a railway locomotive railway carriage or tram-motor or tram-car or a traction engine (not being a motor tractor) as defined in Part XXIV. of the *Local Government Act 1958* or a motorized wheel-chair capable of a speed of not more than seven kilometres per hour which is used solely for the conveyance of an invalid person.

"Heavy vehicle" means —

- (a) a motor car —
 - (i) weighing more than three tonnes unladen; tare weight or
 - (ii) designed for the carriage of passengers and with a seating capacity for more than twelve adult persons (not including the driver); or
- (b) a motor car upon which is mounted or in which is incorporated any machinery plant or apparatus the weight of which motor car including such machinery plant or apparatus is more than three tonnes —

but does not include an articulated motor car or a large trailer combination.

"Large trailer combination" means a heavy vehicle which is towing a trailer weighing more than 750 kilograms unladen.

"Articulated motor car" means a motor car comprising a prime mover and a semi-trailer constructed in such a way that the semi-trailer is attached to and pivoted on the prime mover by imposition thereon so that the semi-trailer is free to turn relative to the prime mover when the combination is rounding a curve and so that part of the mass of the semi-trailer and of the load (if any) carried thereon is borne by the prime mover.

22C.(1) Any person who drives a motor car upon a highway without being the holder of an appropriate permit or licence to drive that type of motor car upon a highway shall be guilty of an offence and liable—

- (a) to a penalty of not less than 5 penalty units or more than 15 penalty units or to imprisonment for a term of not more than three months; or
- (b) if the court is satisfied that the person concerned at some time prior to the commission of the offence with which he is charged has been the holder of an appropriate licence (whether issued in Victoria or in another State or a Territory of the Commonwealth) or an International Driving Permit, to a penalty of not more than 5 penalty units or to imprisonment for a term of not more than one month.

Telecom staff in the course of their employment shall not —

1. drive a motor car upon any land unless he is the holder of a licence to drive a motor car;
2. drive a heavy vehicle upon any land unless he is the holder of a licence to drive a motor car which has been indorsed to authorise the holder to drive a heavy vehicle or a large trailer combination or an articulated motor car;
3. drive a large trailer combination upon any land unless he is the holder of a licence which has been indorsed to authorise the holder to drive a large trailer combination or an articulated motor car;
4. drive an articulated motor car upon any land unless he is the holder of a licence to drive a motor car which has been indorsed to authorise the holder to drive an articulated motor car.

Refer: Senior Engineer — Mechanical Aids
64 3131 Ext. 230

Suggested File Position:—
Adjacent to E.I. Office Procedure,
Transport L.0010(V)
"Driver's Licences. Motor Transport"

LEGAL USE OF THE COMMISSION'S FLEET OF HEAVY VEHICLES, MECHANICAL AIDS, TRAILERS AND SEMI-TRAILERS ON STATE ROADS.

1. INTRODUCTION.

Certain State regulations apply to the legal road use of the Commission's fleet of heavy vehicles, articulated vehicles, selected mechanical aids and heavy vehicle/trailer combinations.

The following information is provided to assist in the understanding of these regulations and supplements Victorian Engineering Instruction Office Procedure, Transport L.0010(V) "Driver's Licences. Motor Transport".



Typical articulated vehicle requiring full articulated endorsement.

2. ENDORSEMENTS TO DRIVER'S LICENCES.

The Driver's Licences of staff driving heavy vehicles, selected mechanical aids and/or trailers and articulated vehicles are required to be endorsed. There are 3 types of licence endorsements which are issued by the Victorian Police and they apply as follows:—

(a) Heavy Vehicle Endorsement is required when the vehicle to be driven:—

(i) weighs more than 3 tonnes unladen (i.e. tare greater than 3 tonnes)

OR

(ii) is designed for the carriage of passengers and with a seating capacity for more than 12 persons not including the driver

OR

(iii) is fitted with any plant or apparatus which gives a combined weight of the vehicle and plant or apparatus of more than 3 tonnes.

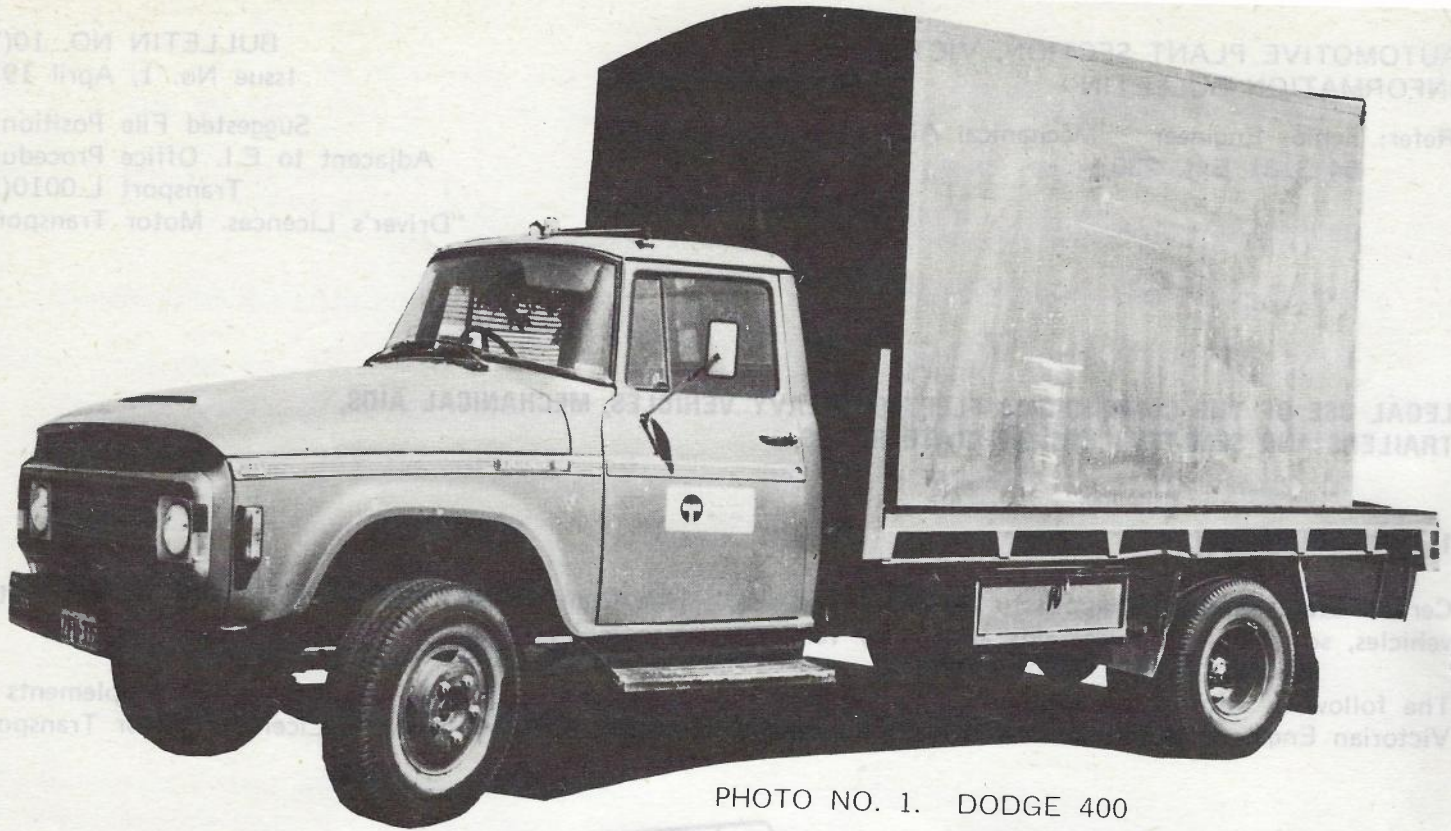


PHOTO NO. 1. DODGE 400

GROSS. 6.260 t
*TARE. 3.212 t
LOAD. 3.048 t



PHOTO NO. 2. CASE BACKHOE
& FRONT END LOADER

GROSS.
*TARE. 5.30 t
LOAD.

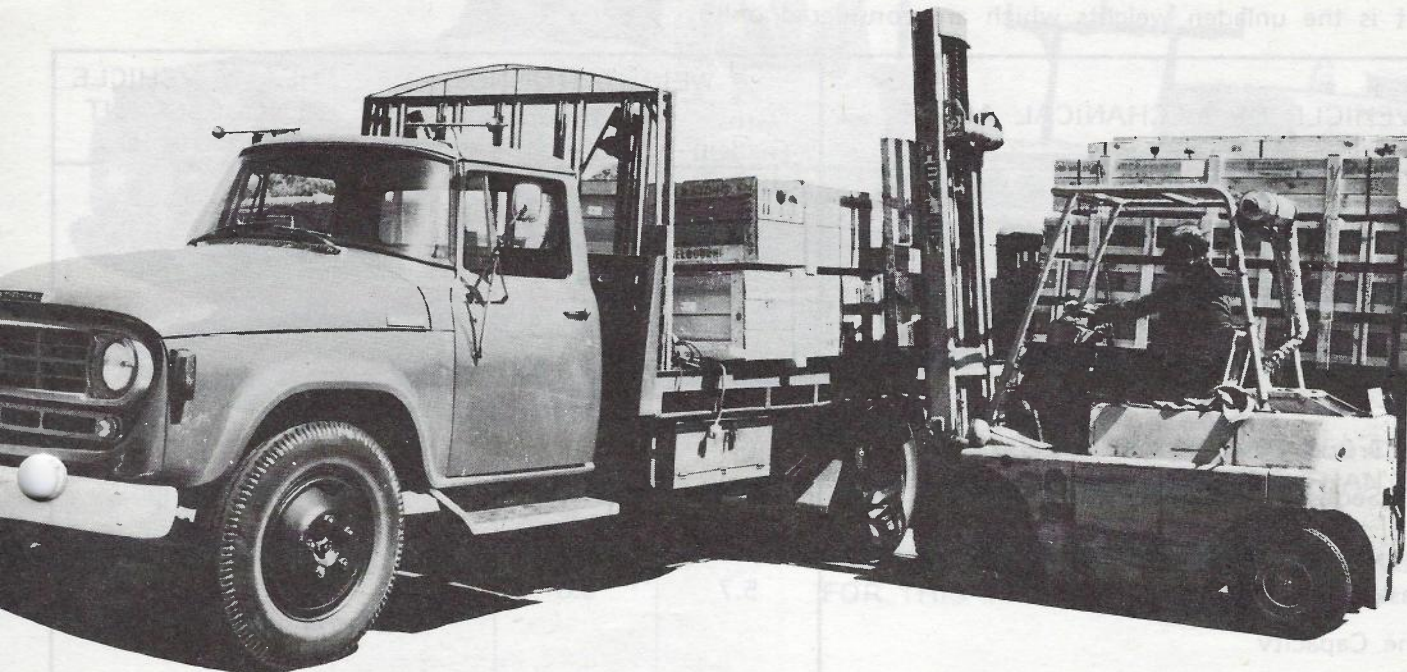


PHOTO NO. 3. (i) INTERNATIONAL D1610

GROSS. 6.260 t
 *TARE. 3.212 t
 LOAD. 3.048 t

(ii) HENLEY FORKLIFT
 TRUCK

GROSS. 6.40 t
 *TARE. 4.00 t
 LOAD. 2.40 t

Photos 1, 2 and 3 show typical examples of mechanical aids and vehicles which require an operator to hold at least a heavy vehicle endorsed licence. For other typical examples refer to Table 1.

*NOTE: Tare weights are greater than three tonne.

TABLE 1 — Typical Examples of Mechanical Aids and Vehicles Requiring Heavy Vehicle Endorsement.
 (Note: It is the unladen weights which are considered only).

VEHICLE OR MECHANICAL AID	WEIGHT (TONNES)			HEAVY VEHICLE ENDORSEMENT REQUIRED
	Gross (Laden)	Tare (Unladen)	Load	
3 Tonne Capacity Cartage Truck — Bedford J2	5.7	2.5	3.2	No
5 Tonne Capacity Cartage Truck — Ford D Series	8.6	3.7	4.9	Yes
Workbasket on 3 Tonne Capacity Truck Chassis — Abbey SK.300 on Bedford J2	5.7	3.8	1.9	Yes
Front End Loader 0.6 cubic metre bucket — Ford 3500 Series		5.4		Yes
Fork Lift Vehicle Medium Size — Toyota FG.32		5.0		Yes
Post-Hole Borer — Telelect IPG	9.6	9.6		Yes

(b) Large Trailer Combination Endorsement is required if the vehicle to be driven is a heavy vehicle as described in paragraph (a) which is towing a trailer weighing more than 750 kilograms (.75 tonne) unladen. Refer to table 2 for typical trailer weights.

However, if such a trailer is towed by a vehicle weighing less than 3 tonnes, it is recommended that it should be driven by a person holding a Large Trailer Combination Endorsed Licence even though this is not required by law.

TABLE 2 - Typical Trailer Weights and Endorsement Requirements
 (Note: - If a combination weight is shown, it is the total weight of the vehicle and trailer.)



PHOTO NO. 4. PARTY TRUCK
 (TARE LESS THAN 3t) TOWING 250 CFM
 COMPRESSOR (TARE GREATER THAN .75t)

- LARGE TRAILER COMBINATION
 ENDORSEMENT IS STRONGLY RECOMMENDED
 FOR THIS TYPE OF COMBINATION.

PHOTO NO. 5. WINCH TRUCK
 (TARE GREATER THAN 3t) TOWING 250 CFM
 COMPRESSOR (TARE GREATER THAN .75t)
 - LARGE TRAILER COMBINATION
 ENDORSEMENT IS REQUIRED BY LAW FOR
 THIS TYPE OF COMBINATION.

Trailer Weight (Tons)	Trailer Weight (Tons)	Trailer Weight (Tons)	Trailer Weight (Tons)
1.5	1.5	1.5	1.5
4.1	4.1	4.1	4.1
5.1	5.1	5.1	5.1

(g) Articulated Vehicle Endorsement is required if the vehicle is equipped with a turntable arrangement.

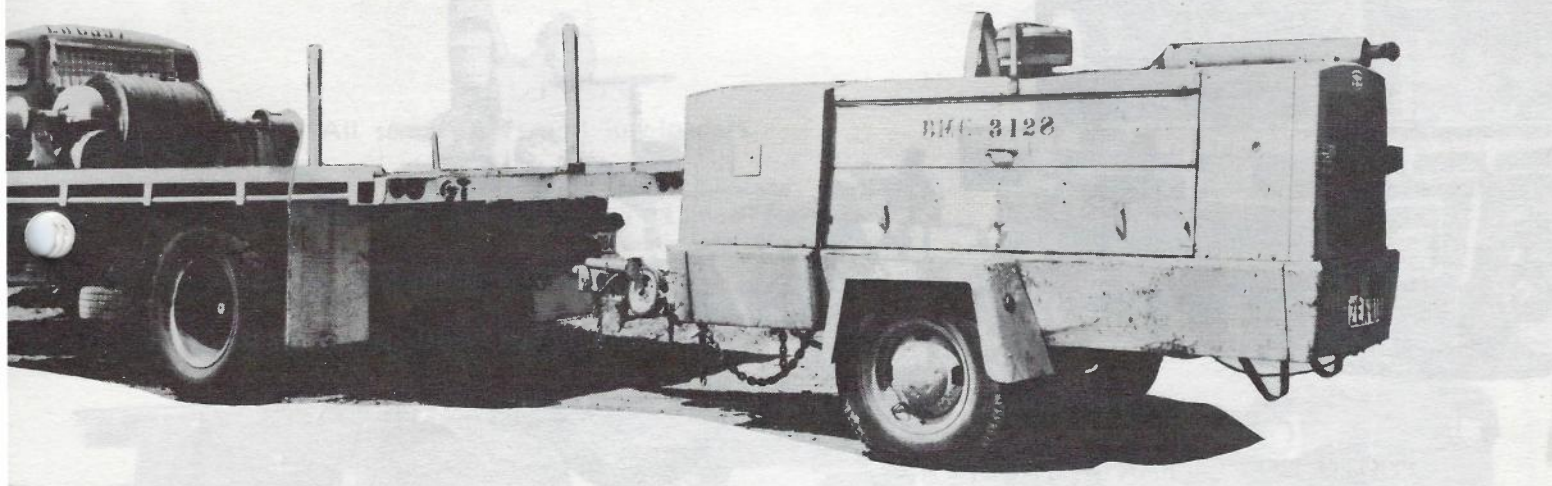


PHOTO NO. 5. WINCH TRUCK
 (TARE GREATER THAN 3t) TOWING 250 CFM
 COMPRESSOR (TARE GREATER THAN .75t)

- LARGE TRAILER COMBINATION
 ENDORSEMENT IS REQUIRED BY LAW FOR
 THIS TYPE OF COMBINATION.



PHOTO NO. 6. WINCH TRUCK
(TARE GREATER THAN 3t) TOWING V-30 ON
TRAILER (TARE GREATER THAN 0.75t)

— LARGE TRAILER COMBINATION
ENDORSEMENT IS REQUIRED BY LAW FOR
THIS TYPE OF COMBINATION.

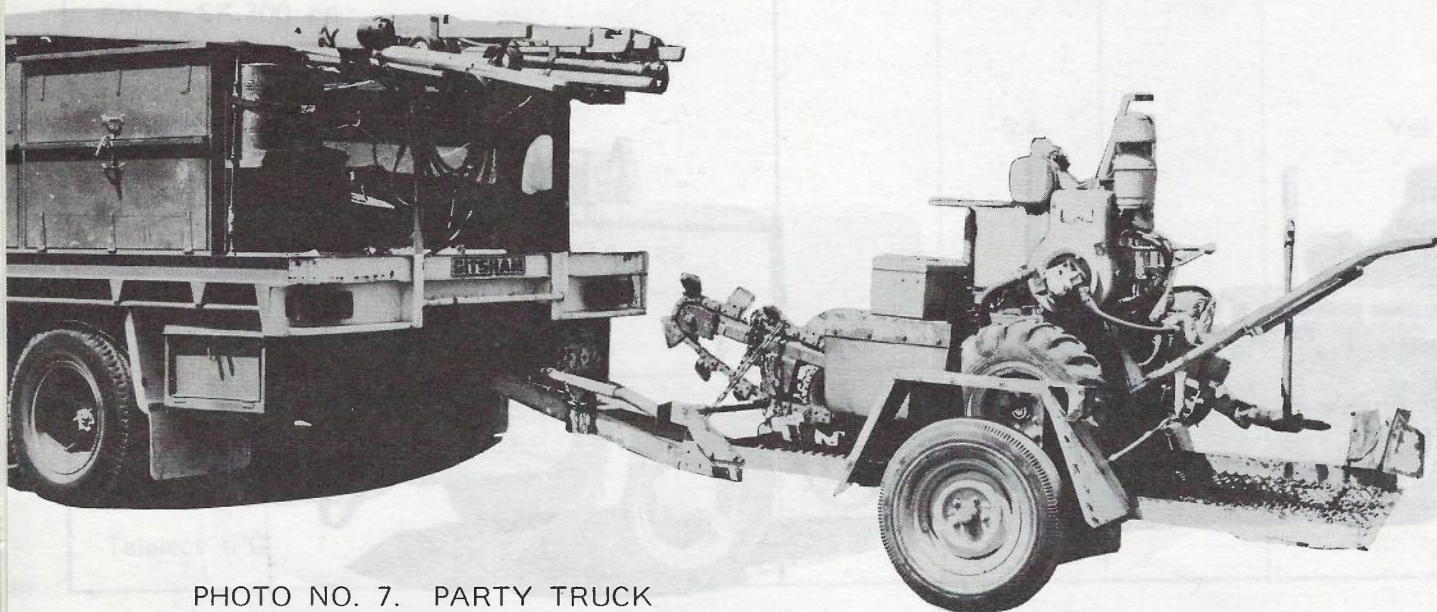


PHOTO NO. 7. PARTY TRUCK
(TARE LESS THAN 3t) TOWING M4 DITCHER
ON TRAILER (TARE LESS THAN 0.75t)

NO ENDORSEMENT IS REQUIRED FOR
THIS TYPE OF COMBINATION.

Photos 4 to 7 show various types of combinations of vehicles and trailers and the type of endorsement required or recommended.

TABLE 2 — Typical Trailer Weights and Endorsement Requirements.

(Note: It is the unladen weights which are considered only)

TRAILER	WEIGHT (TONNES)			LARGE TRAILER COMBINATION ENDORSET. REQ'D.
	Gross (Laden)	Tare (Unladen)	Load	
Spoil Trailer 1 Tonne Capacity	1.3	0.3	1.0	No
Jointers Trailer 0.75 Tonne Capacity	1.15	0.4	0.75	No
Air Compressor Silenced 125 CFM	1.5	1.5	—	Yes
CASE DAUIS 14+4 & DIGZALL (SLIGHTLY LESS)	1.5	0.6	0.9	
Air Compressor Silenced 250 CFM	2.0	2.0	—	Yes
R30 DITCHER	3.4	1.1	2.3	YES
V30 Ditcher Trailer CASE DAUIS - TASK FORCE	2.4 6.2	0.9	1.5	Yes
R65 Ditcher Trailer	R65	1.5	R65	Yes
OR	4.1		2.6	
Fiat 505 Trailer	Fiat 505 5.1		Fiat 505 3.6	

(c) Articulated Vehicle Endorsement is required if the vehicle is articulated i.e. pivots by means of a turntable arrangement.

EXAMPLES: All semi-trailers and low-loaders.

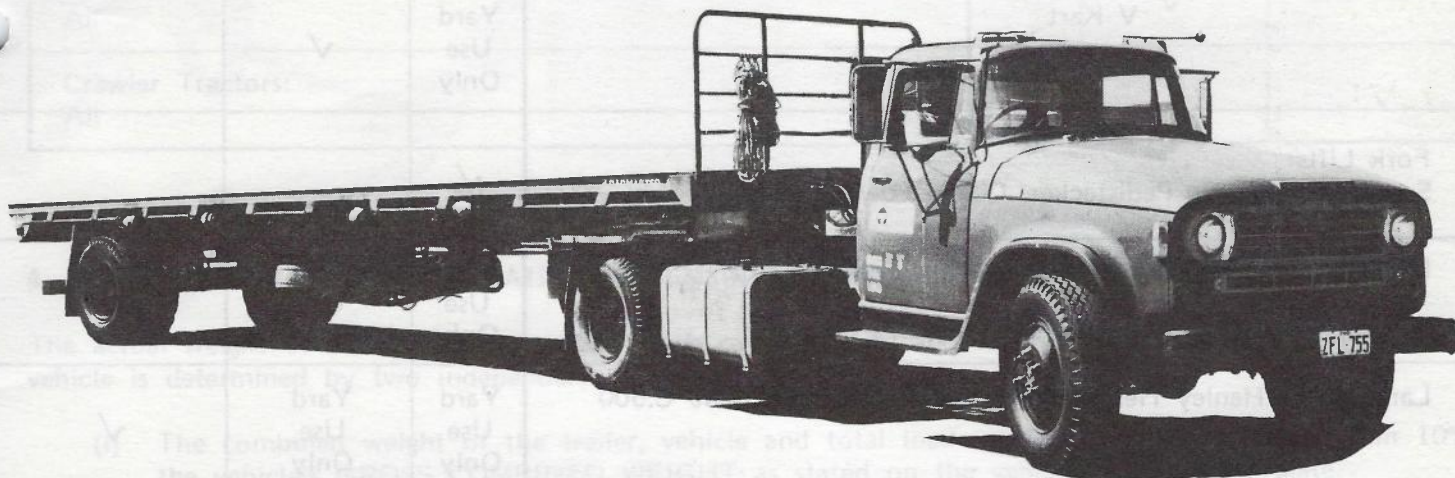


PHOTO NO. 8. INTERNATIONAL D1610 PRIMEMOVER WITH ARTICULATED TRAY.

3. DRIVER'S LICENCE AND ENDORSEMENT REQUIREMENTS FOR MECHANICAL AIDS.

Table 3 below, lists the full range of mechanical aids operated by District Lines staff and specifies the Driver's Licence qualifications necessary for the legal operation of these units.

Staff nominated for operation of, or training on the mechanical aids listed must have as a pre-requisite the appropriate licence qualifications.

TABLE 3 — Licence Endorsement Required for Typical Mechanical Aids.

MECHANICAL AIDS	NONE	ORDINARY LICENCE	HEAVY ENDORSEMENT
Ditchers: Small — M4, Wenco, Digzall Mk18	✓		
Medium — Ditchwitch V30, R30		✓	
Large — Ditchwitch R65, Davis Roadrun'r.			✓
Cranes: Tractor Mounted — 3 ton, 5 ton, 8 ton capacity units	Yard Use Only	Yard Use Only	✓
Truck Mounted — Robolift, Atlas 4006, Cranvel Hydrolift			✓
V Kart	Yard Use Only	✓	
Fork Lifts: Small — Crown Pedistacker, Clarke Power Worker	✓		
Medium — Henley Hawke and Merlin, Tovota FG32	Yard Use Only	Yard Use Only	✓
Large — Henley Hercules, Hyster Challenger, Clarke C.500	Yard Use Only	Yard Use Only	✓

MECHANICAL AIDS	NONE	ORDINARY LICENCE	HEAVY ENDORSEMENT
Winch Trucks: All			✓
Travel Towers: All			✓
Front-End Loaders: Large — Ford, Massey Ferguson			✓
Small — Scatback		✓	
Combination Back-Hoe: Large — Poclairn			✓
Medium — John Deere, Ford			✓
Small — Cranvel Wombat, Little Digger		✓	
V30 with back-hoe attachment		✓	
Wheeled Tractors: All — Massey Ferguson, Fiat			✓
Post Hole Borers: All — Telelect and Proline			✓
Under-Road Borers: All	✓		
Snow Vehicles: All		✓	
Crawler Tractors: All			✓

4. VEHICLE/TRAILER – WEIGHT RATIO AND COMBINED ALLOWABLE WEIGHT.

The actual weight of a trailer and its load which can be safely and legally towed behind a particular vehicle is determined by two independent factors:

- (i) The combined weight of the trailer, vehicle and total load must not exceed by more than 10% the vehicle's GROSS COMBINED WEIGHT as stated on the vehicle's compliance plate.

- (ii) The total weight of a trailer and its load must not exceed that of the towing vehicle and its load by more than 10% if the trailer is not fitted with brakes.

NOTE: If the trailer is fitted with brakes then no ratio limit is required by law, provided point (i) is adhered to.

5. BRAKE REQUIREMENTS FOR TRAILERS.

Brakes on trailers are required as follows and the Commission's fleet of trailers is equipped with brakes in accordance with these requirements.

- (a) Trailers having an unladen weight of less than 500Kgs (0.5 tonnes) are not required to be fitted with brakes.
- (b) Trailers having an unladen weight of 500Kgs or more are required to be fitted with brakes. The brakes are of the types shown below and must operate on 2 or more wheels of any axle.
- (i) Over-run brakes: for trailers with unladen weights of between 500Kgs and 1 tonne;
- (ii) Vacuum or Air Brakes: for trailers with unladen weight exceeding 1 tonne.

Trailers having a gross weight exceeding 2 tonnes must have vacuum or air brakes such that if the trailer becomes detached from the towing vehicle, the trailer brakes will be applied automatically and the brakes of the towing vehicle will remain fully operative.

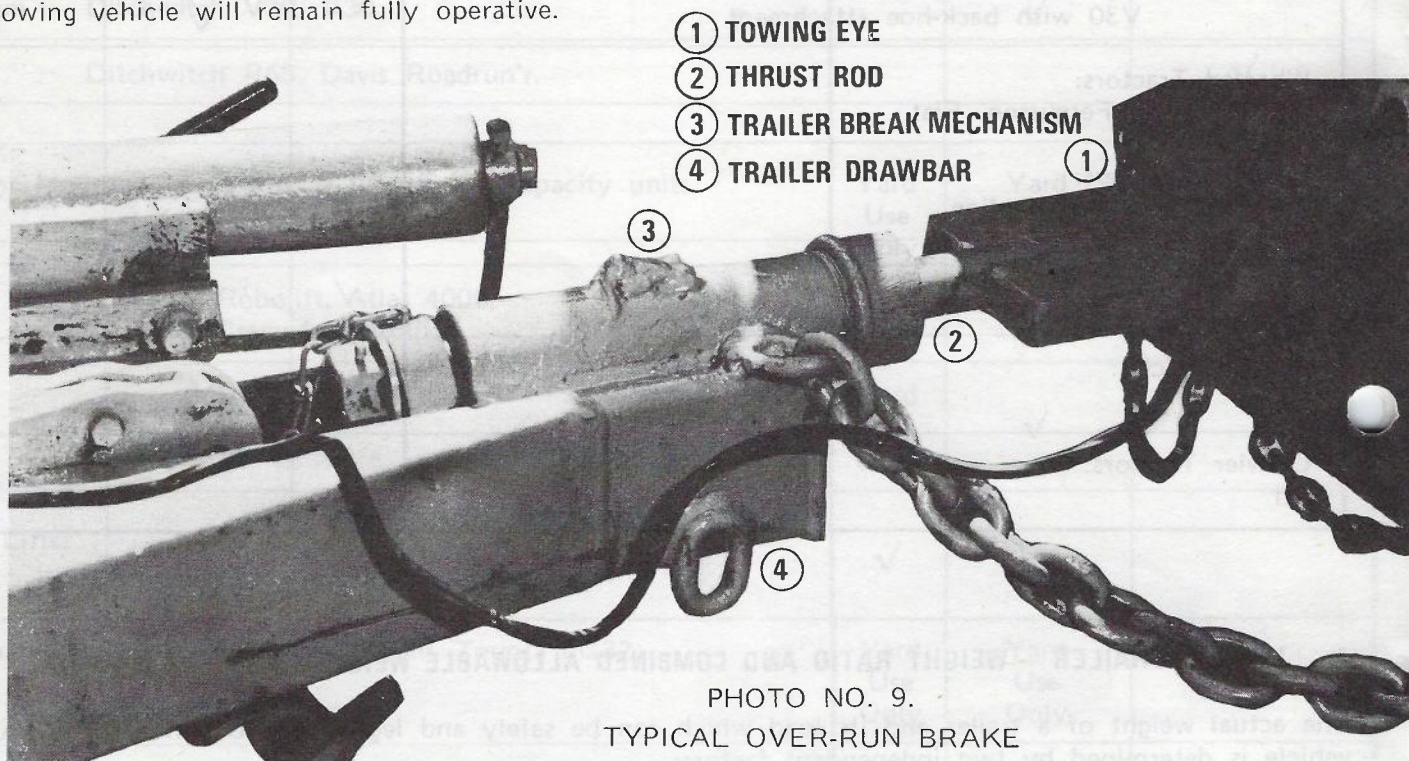


PHOTO NO. 9.
TYPICAL OVER-RUN BRAKE

Typical example of over-run brake mechanism.

When the vehicle brakes, the momentum of the trailer forces a rod to plunge in the trailer brake master cylinder or, in the case of mechanical brakes, to actuate a lever and cable system.

TABLE 4 – TOWING CAPACITY OF VEHICLES

(tonne \approx cwt/20)

VEHICLE TYPE & MODEL		DOM. PREFIX	TARE	GVM	GCM	TOWING CAPACITY	
						VEHICLE LOADED (GCM-GVM)	VEHICLE EMPTY (GCM-TARE)
TC30	Ford F350	EFX	2.26	4.53	6.13	1.60	3.77
	Dodge D5N 326	EDX	2.31	3.84	6.80	2.96	4.49
	Inter D1310	EJX	2.49	4.90	7.55	2.65	5.06
TL30	Ford F250	EFX	2.04	3.44	4.46	1.02	2.42
	Ford F350	EFX	2.70	4.53	6.13	1.60	3.43
	Dodge D5N 326	EDX	2.31	3.84	6.80	2.96	4.49
	Inter D1310	EJX	2.49	4.90	7.55	2.65	5.06
TP30	Dodge D5N 356	EDX	2.76	4.40	6.80	2.40	4.04
TC60	Dodge D5N 466	FDX	2.83	6.30	9.07	2.77	6.14
	Inter D1510	FJX	2.86	6.12	11.35	5.23	8.39
	Ford D0712	FFX	3.08	6.10	9.60	3.50	6.52
TL60	Dodge D5N 466	FDX	3.17	6.58	9.07	2.49	5.90
	Ford D0712	FFX	3.28	6.10	9.60	3.50	6.32
TP60	Dodge D5N 466	FDX	3.30	6.58	9.07	2.49	5.77
	Inter D1510	FJX	3.19	6.12	11.35	5.23	8.16
TT60	Dodge D5N 466	FDX	3.70	6.66	9.07	2.41	5.37
	Ford D0712	FFX	3.34	6.10	9.60	3.50	6.26
TC100	Inter D1610	GJX	3.29	8.85	14.50	5.65	11.21
	Dodge D5N 576	GDX	3.48	8.62	10.21	1.59	6.73
	Inter ACCO 1710A	GJX	4.38	10.10	17.50	7.40	13.12
	Bedford EFN3	GBX	3.52	9.75	14.99	5.24	11.47
TT100	Inter D1610	GJX	3.92	8.85	14.50	5.65	10.58
TC140	Inter ACCO 1810B	GJX	4.86	12.85	20.90	8.05	16.04
TT140	Ford D1211	GFX	5.04	12.90	18.80	5.90	13.76
	Inter ACCO 1810B	GJX	5.33	12.85	20.90	8.05	15.57
TL40 (4x4)	Inter D1410 (4x4)	GJX	3.10	5.66	9.10	3.44	6.00

NOTE: i. All figures are in tonnes.

ii. TC = Cartage truck, TL = Lines truck, TP = Party truck, TT = Tipper truck.

iii. TARE = Unladen weight of vehicle.

GVM = Gross vehicle mass permitted.

GCM = Gross combined mass of both vehicle and trailer permitted.

TABLE 5 — TOWING CAPACITIES OF TRUCK MOUNTED MECHANICAL AIDS

All figures are in tonnes

VEHICLE EMPTY (GCM-TARE)	VEHICLE LOADED (GCM-GVM)	GCM	GVM	TARE	GVM	GCM	TOWING CAPACITY	
							VEHICLE LOADED (GCM-GVM)	VEHICLE EMPTY (GCM-TARE)
	MECH AID TRUCK CHASSIS MODEL							
				DEPENDANT UPON THE PARTICULAR MECHANICAL AID FITTED				DEPENDANT UPON THE PARTICULAR MECHANICAL AID FITTED
	Bedford MFR				11.18	14.99	3.81	
	" MJR				11.18	14.99	3.81	
	" J5				8.84	14.99	6.15	
	Ford D1211				12.90	19.05	6.15	
	International Harvester C1600				8.85	14.50	5.65	
	" " C1600 (4x4)				9.07	13.60	4.53	
	" " D1610				8.85	14.50	5.65	
	" " D1610 (4x4)				9.07	13.60	4.53	
	" " ACCO 510A (4x4)				7.50	10.45	2.95	
	Dodge D5N/576				8.62	10.21	1.59	
	Isuzu KS21				6.07	7.10	1.03	
	" JBR420				12.00	15.00	3.00	

NOTE: TARE = Unladen weight of vehicle
 GVM = Gross vehicle mass permitted
 GCM = Gross combined mass of both vehicle and trailer permitted

VEHICLE DOMESTIC CLASSIFICATIONS

@ 23/6/80

(First Letter)

- B - Sedans & Station Wagons
- C - Utes & Panel Vans to 14 cwt.
- D - Utes & Panel Vans 15 to 20 cwt.
- E - 30 cwt. Trucks
- F - 3 tonne Trucks
- G - 5 to 10 tonne Trucks
- H - Trucks 12 tonne & over
- K - 4x4 Under 30 cwt.
- L - 4x4 30 cwt. & over

(Second Letter)

- B - Bedford
- C - Chrysler (MITSUBISHI)
- D - Dodge
- E - Mack
- F - Ford
- G - Holden (ISUZU)
- J - International
- K - Kenworth
- L - Leyland
- M - Morris - Austin
- N - Datsun (NISSAN)
- R - Land Rover
- T - Toyota
- V - Volkswagon
- X - White

(Third Letter) - if no third letter speedo in kms.

- X - Speedo in kms.
- M - Speedo in miles

(Note : tonne \div cwt/20)

HIRE RATES AND REPLACEMENT AGE OF VEHICLES

For the purpose of economic studies required in preparing proposals, the following data should be used :-

DEPARTMENTAL HIRE RATES

B	Sedans and Station Wagons	15 cents per Km
C	Vehicles under 0.75 tonne	16 " " "
D	Vehicles 0.75t and under 1.5 tonne	17 " " "
E	Vehicles 1.5t and under 3 tonne	32 " " "
F	Vehicles 3t and under 5 tonne	35 " " "
G	Vehicles 5t and under 12 tonne	40 " " "
H1	Flat top semis	75 " " "
H2	Low-loaders	71 " " "
K	Four Wheel Drive vehicles under 1.5t	19 " " "
L	Four Wheel Drive vehicles 1.5t and over	30 " " "

BY-LAW 103

A hire rate of 21 cents per kilometre should be used for all classes of vehicles.

<u>REPLACEMENT AGE</u>	<u>MINIMUM M/AGE REQ.</u>
Sedans	4 years <u>and</u> 40 000 Km*
Station Wagons, Light Utilities and Vans	4 " " 40 000 Km*
Four Wheel Drive Utilities	4 " " 48 000 Km*
0.75t Utilities and Vans, Jointer's Vans and Jointer's Utilities	5 " " 48 000 Km*
Five tonne Cartage Trucks and above	6 " " 48 000 Km*
All Tip Trucks	6 " " 48 000 Km*
1.5 tonne and 3 tonne Trucks	7 " " 48 000 Km*
All Double Cabin Party Trucks	9 " " 48 000 Km*

NOTE : Vehicles which are of insufficient age for inclusion in the programme but are expected to have exceeded 112 000 Km* at 30 June 1985, are included in this programme.

for Avast mode add 20% Sales Tax
 for Imported " 40% Sales Tax & Duty } for 1988/89
 -3-

LIST OF TYPICAL VEHICLE TYPES & PRICES (1987/88)

Type	Approx. Price	Typical make & description
SS	\$7,600	Corolla or Pulsar 4 door sedan
SM	\$8,700	Corona or Sigma 4 door sedan
SL	\$9,600	Commodore or Falcon 4 door sedan
WM	\$9,400	Corona or Sigma station wagon (avail. with L/racks)
WM all roads	\$12,000	Subaru or Tercel 4 wheel drive station wagon (avail with l/racks)
WL	\$10,600	Commodore or Falcon station wagon (avail with l/racks, T/bar & LSD)
UO.6	\$9,900	Falcon Utility (avail with t/cover, t/bar, l/racks & LSD)
PV0.6	\$10,200	Falcon Panel Van (avail with t/bar, l/racks, LSD & Tech fittings)
UJO.8	\$8,500	Hilux or Courier Jointers Utility (avail with t/bar & LSD)
UH1	\$19,000	F100 Utility (avail with l/rack & t/bar)
TC1	\$8,000	Hilux or Courier 1 tonne Alum tray with dropsides Tray size 1980mm x 1680mm (avail with l/rack, t/bar & LSD)
PV0.7	\$9,550	Mitsubishi Panel Van (avail with l/rack & Tech fittings)
PVFO.7	\$12,250	Mitsubishi 4 wheel drive panel van (avail with l/rack & tech fittings)
PVJO.8	\$11,000	Toyota or Mazda Panel van fitted for Jointers (avail with t/bar and LSD)
PJFO.8	\$14,000	Ford Econovan or Mazda Jointers Van 4 wheel drive
PV1	\$10,500	Toyota or Mazda 1 tonne panel van (avail with l/racks, t/bar and LSD)
PV1.5	\$17,500	Daihatsu 1.5 tonne panel van (avail with l/rack, t/bar and CPA fittings)
BUS12	\$15,200	Toyota or Nissan 12 Passenger bus
TCFO.7	\$13,000	Toyota Hilux 4 wheel drive 0.8 tonne Alum tray with drop sides tray size 1980mm x 1680mm (avail with l/racks and t/bar)
TCF1	\$17,700	Toyota or Nissan 4 wheel drive 1 tonne Alum tray with drop sides tray size 1980mm x 1680mm (avail with l/racks & t/bar)
PVF1	\$13,500	Ford Econovan or Mazda 4 wheel drive panel van (avail with l/rack & t/bar)

LIST OF TYPICAL VEHICLE TYPES & PRICES

Type	Approx. Price	Typical make & description
PVf1 HDS	\$18,400	Toyota or Nissan long wheel base 4 wheel drive 1 tonne Panel van (avail with l/racks, t/bar and CPA fittings)
WLF	\$21,000	Toyota or Nissan 4 wheel drive station wagon (avail with l/racks and t/bar)
TC1.5	\$16,000	Ford F350 1.5 tonne capacity cartage truck tray size 2750mm x 2130mm (Note: not suitable for towing)
TC3	\$28,500	Isuzu SBR422 3 tonne cartage truck tray size 4570mm x 2440mm
TC5	\$30,000	Isuzu SBR422A 5 tonne cartage truck tray size 5180mm x 2440mm (avail with space for crane)
TC7.5	\$38,000	Isuzu JCR500 7.5 tonne cartage truck tray size 5640mm x 2440mm (avail with space for crane)
TC12	\$71,500	Volvo F7 12 tonne cartage truck tray size 6550mm x 2440mm
TL1.5	\$13,200	Ford F350 1.5 tonne line truck with l/racks tray size 2750mm x 2130mm (Note: not suitable for towing)
TL3	\$30,500	Isuzu SBR422 3 tonne line truck with l/racks tray size 3660mm x 2130mm
TP3	\$36,000	Isuzu SBR422 Double cabin 3 tonne line truck with l/racks tray size 2750mm x 2130mm
TLM3	\$40,000	Isuzu SBR422 Multi functional line truck with lockers, pipe carrier, small crane etc. tray size 4400mm x 2440mm
TPM3	\$45,500	Isuzu SBR422 Double cabin multi functional line truck with lockers, pipe carrier, small crane etc. tray size 4400mm x 2440mm
TT2	\$22,000	Isuzu NKR57 1 1/2 cubic metre capacity tip truck
TT5	\$35,500	Isuzu SBR422A 3 cubic metre capacity tip truck
TT7.5	\$45,250	Isuzu JCR 500 4 1/2 cubic metre capacity tip truck
TV2	\$25,000	Nissan Cabstar test van
TUT12	\$57,000	Volvo F7 12 tonne capacity semi trailer tray size 9750mm x 2440mm

NOTE: TCf1, PVf1 AND WLF have Diesel Engines
 All trucks 2 tonne capacity and above have diesel engines
 All trucks 3 tonne capacity and above have tow bars and foot control air brakes as standard.

TRUCK MOUNTED CRANES

CRANES

TYPE	SIZE (metre tone)	TYPICAL MODELS	COST @ JUNE 1985
EAB 1	1.75	HIAB 230 BTY	\$4.3K
EAB 2	3	HIAB 445 A	\$9.6K
EAB 3	5	HIAB 650A / ATLAS AK300G	\$12K
EAB 4	7.4	HIAB 865A / ATLAS AK3500	\$14.5K
	9.7	PALSINGER PK 9700	\$14K

TRUCKS

TYPE	TYPICAL MODELS	COST @ JUNE 1985	SUITABLE* CRANE TYPE	PERATED LOAD CAPACITY DUE TO CRANE FITTED
TCS (4x2)	ISUSU SCR 480 FORD CARGO 1113	\$18.5K \$22.5K	NIL EAB 1,2+3	N/A TC 4
TC 7.5 (4x2)	ISUSU JCR 500 FORD CARGO 1313 HINO FF 177 LWB	\$22.5 \$24.3K \$23.5K	} EAB 1,2,3+4	TC 6.5
TC 7.5 (4x4)	MERC LA911	\$42.5K		

* WHEN MOUNTED IMMEDIATELY BEHIND THE DRIVERS CABIN

VEHICLE TYPE AND MODEL	GWS	GPM	GCM	POWER CAPACITY	
				LOADED	EMPTY
TC 1.5 FORD F350 FORD F350 EP 853 ONWARDS DODGE D5N 326 INTER D1310	2.36	4.53	6.13	1.60	3.77
	2.70	4.50	4.60	0.10	1.90
	2.31	3.84	6.80	2.96	4.49
	2.49	4.90	7.55	2.65	5.06
TC 3 FORD D0712 DODGE D5N 466 INTER D1510 INTER ACCO 610A BEDFORD J2 ISUZU	3.08	6.10	8.60	2.50	5.52
	2.93	6.30	9.07	2.77	6.14
	2.96	6.12	11.35	5.23	8.39
	3.67	7.27	13.60	6.33	9.93
	2.60	5.70	9.50	3.80	6.90
	3.65	8.00	15.00	7.00	11.35
TC 5 FORD D0911 DODGE D5N 576 INTER D1610 INTER ACCO 1710A INTER ACCO 610A ELINO	4.55	9.39	9.53	0.14	4.98
	3.48	8.62	10.21	1.59	6.73
	3.29	8.85	14.50	5.65	11.21
	4.38	10.10	17.50	7.40	13.12
	4.00	9.84	13.60	3.76	9.60
TC 7 FORD D1212 FORD CARGO 1312 INTER ACCO 1810B	4.41	12.90	18.20	5.30	13.79
	4.83	12.87	20.30	7.43	15.47
	4.86	12.85	20.90	8.05	16.04
TL 1.5 FORD F250 FORD F350 FORD F350 EP853 ONWARDS DODGE D5N 326 INTER D1310	2.04	3.44	4.46	1.02	2.47
	2.70	4.53	6.13	1.60	3.43
	2.70	4.50	4.60	0.10	1.90
	2.31	3.84	6.80	2.96	4.49
	2.49	4.90	7.55	2.65	5.06
TL 3 FORD D0712 DODGE D5N 466 INTER ACCO 510A BEDFORD J2 FORD TRADER	3.28	6.10	8.60	2.50	3.32
	3.17	6.58	9.01	2.49	5.90
	3.57	7.27	10.45	3.18	6.88
	2.60	5.70	9.50	3.80	6.90
	3.05	6.40	9.86	3.45	6.81
TP 1.5 DODGE D5N 356 INTER D1310	2.76	4.40	6.80	2.40	4.04
	2.94	4.54	7.53	2.99	4.59

VEHICLE TYPE AND MODEL	TARE	GFR	GCM	TOWING CAPACITY	
				LOADED	EMPTY
TF 3 FORD D0712 DODGE D5N 466 INTER D1510 INTER ACCO 610A ISUZU		6.10	8.60	2.50	5.00
	3.30	6.58	9.07	2.49	5.77
	3.19	6.12	11.35	5.23	8.16
	3.82	8.83	13.60	4.77	9.78
TFP 3 ISUZU SER422	4.35	8.00	15.00	7.00	10.65
TFP 3 (DC) INTER ACCO 630 ISUZU	5.58	9.84	13.60	3.76	8.02
	4.50	8.00	15.00	6.85	10.50
TT 3 FORD D0712 FORD CARGO D0812 DODGE D5N 466 INTER ACCO 610 BEDFORD J2 BEDFORD EDLO	3.34	6.10	8.60	2.50	5.26
	4.38	7.40	16.20	8.80	11.82
	3.70	6.66	9.07	2.41	5.37
	4.20	7.27	10.45	3.18	6.25
	2.70	5.70	9.50	3.80	6.80
	3.00	6.15	10.16	4.01	7.16
TT 5 FORD CARGO D1112 INTER D1610 INTER ACCO 610A BEDFORD EFRA	4.86	11.25	18.00	6.75	13.14
	3.92	8.85	14.50	5.65	10.58
	4.60	9.84	13.60	5.24	9.00
	4.60	10.09	14.99	4.90	10.39
TT 7 FORD D1211 FORD CARGO 1312 INTER ACCO 1810B	5.04	12.90	18.20	5.30	13.16
	5.46	12.90	20.30	7.40	14.84
	4.86	12.85	20.90	8.05	16.04
TV 2 FORD F350 FORD F350 EP853 ONWARDS DODGE D5N 356 INTER D1310	2.90	4.53	6.13	1.60	3.23
	2.72	4.50	4.60	0.10	1.88
	2.85	4.76	6.80	2.04	3.95
	3.03	4.90	7.55	2.65	4.52

SUMMARY OF ROAD TRAFFIC AUTHORITY REQUIREMENT FOR
TRANSPORT OF OVERDIMENSIONED LOADS ON VICTORIAN ROADS

TABLE OF RTA TRANSPORT REQUIREMENTS			
LENGTH *	WIDTH *	HEIGHT *	REQUIREMENTS
≤ 16	≤ 2.5	≤ 4	NIL
16 to 23	2.5 to 3.5	≤ 4	RTA PERMIT, "WIDE LOAD SIGNS"
23 to 26	3.5 to 4.3	≤ 4	RTA PERMIT, "WIDE LOAD SIGNS", FRONT PILOT VEHICLE
> 26	> 4.3	≤ 4	RTA PERMIT, "WIDE LOAD SIGNS", FRONT + REAR PILOT VEHICLES, RADIO CONTACT BETWEEN PILOT VEHICLES & TRUCK, DEPENDING ON ROUTE POLICE ESCORT AT APPROX \$36/HOUR (MIN 2 HOURS)

* ALL DIMENSIONS ARE OVERALL MEASUREMENTS WHICH INCLUDE THE TRUCK. TYPICALLY A LOW LOADER TRAILER DECK IS 750 mm ABOVE GROUND LEVEL REFER TO THE MOTOR VEHICLE CATALOGUE FOR TYPICAL TRUCK/TRAILER SPECIFICATIONS.

SM 18/6/05

ATCO BUILDING TRANSPORT COSTS

WIDTH CONSIDERATIONS

- Up to and including 3 metres no escort required
- Over 3 metres (ie) 3-6 metres, police escort required at a significant cost.

LENGTH CONSIDERATIONS

- Up to and including 6 metres the building can be delivered by a truck with a crane fitted
- over 6 metres up to and including 12 metres the building must be delivered on a semi trailer and a local crane must be hired to load & unload the building
- over 12 metres a semi trailer and police escort is required. A crane is also required for loading & unloading

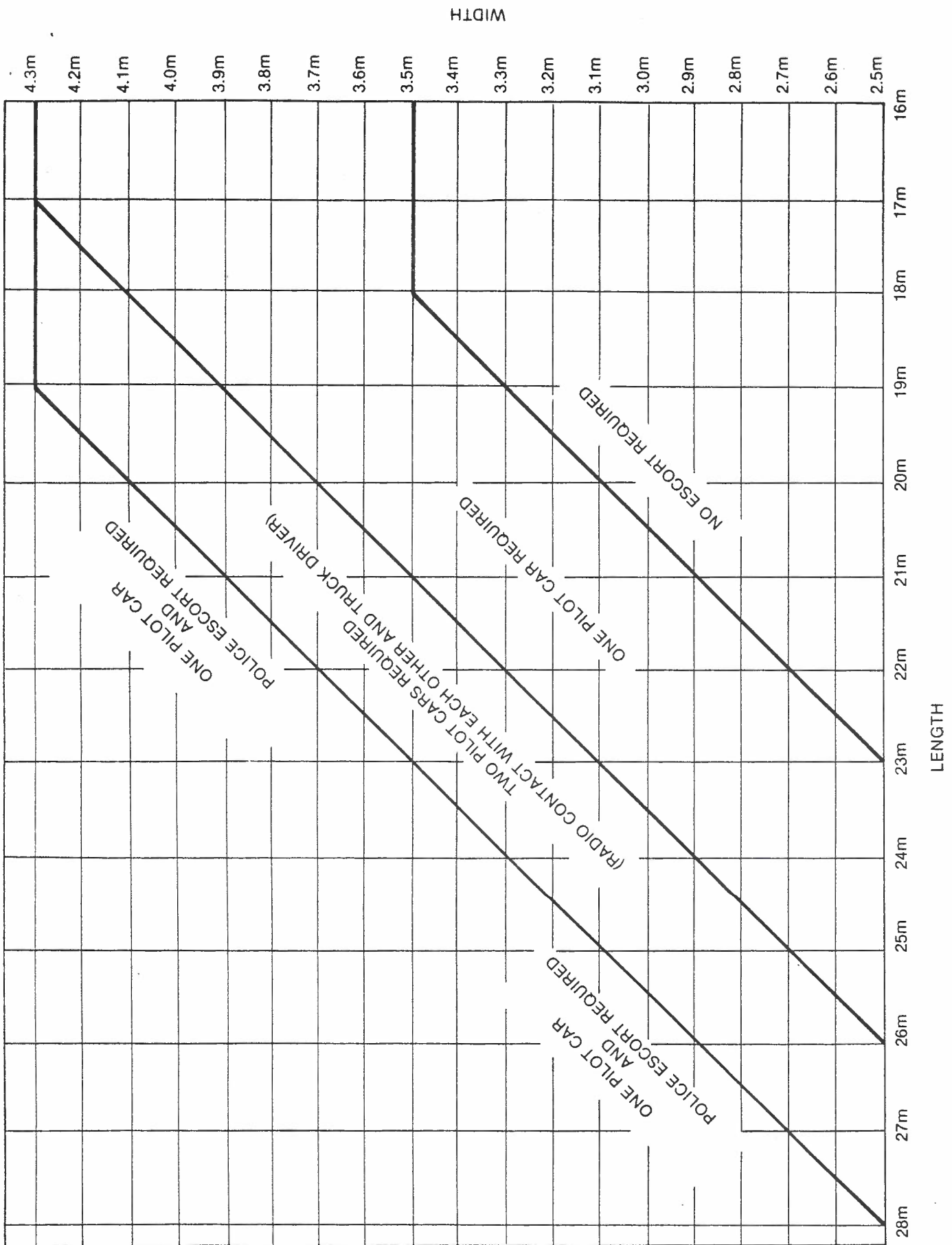
Simon Moorhead

4/6/86

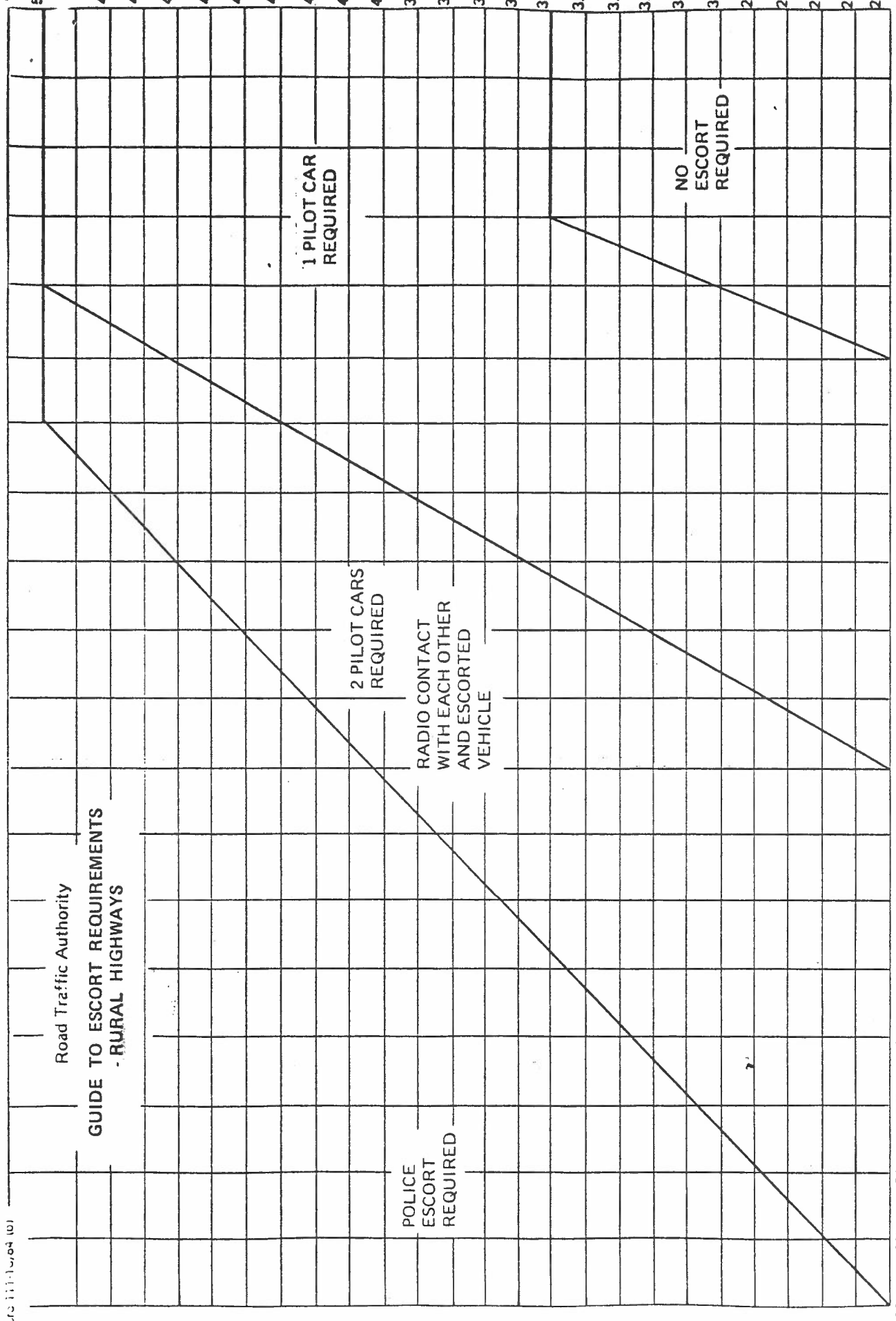
TRAFFIC SECTION

ESCORT REQUIREMENT - METROPOLITAN AREA

Appendix A



Road Traffic Authority
GUIDE TO ESCORT REQUIREMENTS
- RURAL HIGHWAYS



POLICE
ESCORT
REQUIRED

2 PILOT CARS
REQUIRED

1 PILOT CAR
REQUIRED

NO
ESCORT
REQUIRED

RADIO CONTACT
WITH EACH OTHER
AND ESCORTED
VEHICLE

LENGTH

39m 38m 37m 36m 35m 34m 33m 32m 31m 30m 29m 28m 27m 26m 25m 24m 23m 22m 21m 20m

Small Sedan

Type Code

SS



Features:

- 4 door sedan powered by a 4 cylinder engine of about 1.6 litres capacity.
- Front bucket seats.
- Manual change gearbox (3 or 4 speed) whichever is standard.
- Power assisted brakes – front disc, rear drum.
- Radial ply tyres, steel belted.
- Colour – white.

Typical Vehicles:

- Toyota Corolla
- Holden Gemini

Number of Persons to be Carried:

Normally driver only or driver and one passenger. Occasionally a second passenger may be carried but seldom would the vehicle be required to carry 4 people.

Weight to be Carried:

Only small weights and volumes which could be fitted into the boot are expected to be carried in this type of vehicle.

Typical Applications:

Self drive or one passenger operation on short or medium distance operation in congested areas where the small vehicle is an advantage in manoeuvring; parking etc. — both on street and garaging. City car pools — for self drive inspections.

Typical Specifications:

Length Overall – 4100 mm
Width Overall – 1580 mm

Wheelbase – 2400 mm
Mass – 900 kg

Medium Sedan

Type Code

SM



Features:

- 4 door sedan, powered by a 4 cylinder engine of about 2 litres capacity.
- Front bucket seats.
- 3 or 4 speed manual change gearbox, whichever is standard in the current model.
- Power assisted brakes - front disc, rear drum.
- Radial ply tyres, steel belted.
- Colour - white.

Typical Vehicles:

- Datsun Bluebird
- Mitsubishi Sigma
- Toyota Corona

Number of Persons to be Carried:

Up to a maximum of 4, including the driver.

Weight to be Carried:

This is essentially a passenger transport vehicle and is expected to be capable of carrying personal effects and luggage and such testing equipment etc. as is appropriate to the journey being made.

Typical Applications:

Car pools in capital cities, at D.T.M's head stations, etc.

Supervisory work, sales promotion, etc. where normally only one occupant, but where distances travelled, road conditions etc. are such that the comfort of the larger vehicle is desirable.

Typical Specifications:

Length Overall - 4400 mm
Width Overall - 1700 mm

Wheelbase - 2600 mm
Mass - 1050 kg

Large Sedan

Type Code SL



Features:

- 4 door sedan, powered by a 6 cylinder engine.
- Front bucket seats.
- 3 or 4 speed manual gearbox, whichever is standard in the current model.
- Power assisted brakes - front disc, rear drum.
- Radial ply tyres, steel belted.
- Colour - white.

Typical Vehicles:

- Ford Falcon
- Holden Commodore

Number of Persons to be Carried:

Up to a maximum of 5, including the driver.

Weight to be Carried:

This is a passenger transport vehicle and is expected to be capable of carrying personal effects and luggage and such other equipment as is appropriate to the journey being made.

Typical Applications:

Car pools in capital cities, at D.T.M.'s head stations, etc. for those occasions when 5 people are travelling to the same destination.

For supervisory work in those inland areas where larger vehicles have shown great durability on the class of roads which exist.

Typical Specifications:

Length Overall	- 4700 mm	Wheelbase	- 2750 mm
Width Overall	- 1800 mm	Mass	- 1400 kg

Optional Extra Fittings

Limited slip differential - must be specified in the order.

Small Station Wagon

Type Code

WS



Features:

- 4 door station wagon, powered by a 4 cylinder engine of approx. 1.6 litre.
- 3 or 4 speed manual gearbox, whichever is standard on current model.
- Power assisted brakes - front disc, rear drum.
- Radial ply tyres, steel belted.
- Front bucket seats.
- Tailgate hinges up.
- Rear seat folds down to provide a level floor space with access from rear passenger doors & tailgate.
- Colour - white.

Typical Vehicles:

- Toyota Corolla

Number of Persons to be Carried:

Normally driver only or driver and one passenger. Occasionally a second passenger may be carried.

Weight to be Carried:

This is essentially a passenger transport vehicle for use where the volume of the goods to be carried frequently exceeds the space available in the small sedan.
With driver and one passenger the load should not exceed 250 kg.

Typical Applications:

Limited use in capital city car pools. Some Senior Lines officers where normally there is the driver only but occasionally there are passengers and there is at times a need to carry and safeguard testing and measuring equipment.

Special Points to Note:

A safety screen will be fitted which may be placed either behind the front or rear seats.

Typical Specifications:

Length Overall	- 4100 mm	Wheelbase	- 2400 mm
Width Overall	- 1580 mm	Mass	- 950 kg

Medium Station Wagon

Type Code

WM



Features:

- 4 door station wagon, powered by a 4 cylinder engine of about 2 litre capacity.
- 3 or 4 speed manual change gearbox, whichever is standard in the current model.
- Power assisted brakes – front disc, rear drum.
- Radial ply tyres, steel belted.
- Front bucket seats.
- Tailgate hinges upward; the window in it is fixed.
- Rear seat folds down to provide a level floor space with access from rear passenger doors and tailgate.
- Colour – white.

Typical Vehicles:

- Holden Camira
- Toyota Corona
- Datsun Bluebird

Number of Persons to be Carried:

Up to a maximum of 4, including the driver.

Weight to be Carried:

This is essentially a passenger transport vehicle for use where the volume of the goods to be carried frequently exceeds the space available in the medium sedan car.
With driver and one passenger, the load should not exceed 300 kg.

Typical Applications:

Limited use in capital city sedan car pools.
Handling teleprinters to subscriber's premises in a city where sufficient men have to be available to handle each machine, and where there are traffic and parking problems.
Some Line Inspectors where normally there is the driver only, but occasionally there are passengers and there is, at times, a need to carry and safeguard testing and measuring equipment e.g. dumpy level and staff.

Type Code WM (Cont.)

Special Points to Note:

The tailgate on this size vehicle is in one piece, is hinged across the top and swings upward above the roof line. Special care must be taken in loading any steps etc. carried on the roof to avoid damage to the tailgate or window.

A safety screen will be fitted which may be placed either behind the front and rear seats. Where a requirement exists to carry longer loads, a panel van should be used.

Optional Extra Fittings:

Ladder rack to drawing CAP128.

Typical Specifications:

Length Overall - 4500 mm
Width Overall - 1650 mm

Wheelbase - 2580 mm
Mass - 1200 kg

Medium Station Wagon All Roads

Type Code WMF



Features:

- 4 door station wagon powered by a 4 cylinder engine.
- 4 speed manual gearbox four wheel drive.
- Radial ply tyres, steel belted.
- Front bucket seats.
- Colour - white.

Typical Vehicles:

- Subaru

Number of Persons to be Carried:

Up to a maximum of 4.

Weight to be Carried:

This is essentially a passenger transport vehicle where occasional off road use is required.

Typical Applications:

Senior Lines Officers, Technicians or office staff where occasional off road use is required.

Optional Extra Fittings:

Ladder racks to drawing CAP128

Typical Specifications:

Length Overall - 4300 mm
Width Overall - 1650 mm

Wheelbase - 2450 mm
Mass - 1130 kg

Large Station Wagon

Type Code

WL



Features:

- 4 door wagon, powered by a 6 cylinder engine.
- Front bucket seats.
- 3 or 4 speed manual gearbox, whichever is standard in current model.
- Power assisted brakes - front disc, rear drum.
- Radial ply tyres, steel belted.
- Hinged quarter vent windows on front doors, if available.
- Rear seat folds down to provide a level floor space with access from the rear passenger doors and tailgate.
- Colour - white.

Typical Vehicles:

- Ford Falcon
- Holden Commodore

Number of Persons to be Carried:

Up to a maximum of 5, including the driver.

Weight to be Carried:

This vehicle is essentially for passenger transport where the number of people and volume of goods to be carried is appropriate to the larger vehicle. With a driver and 3 adult male passengers the load of goods should not exceed 200 kg; this equates to a total load of 0.5 tonnes.

When the vehicle is used for towing, the static load on the drawbar becomes part of the load being carried; the load in the vehicle must be reduced to allow for it.

Typical Applications:

Equipment installation teams in country areas e.g. R.A.X. and radiotelephone.

Type Code WL (Cont.)

Special Points to Note:

The tailgate is in one piece, similar to that on the WM. Special care must be taken in loading any steps, etc., carried on the roof, to avoid damage to the rear window.

The lower roof line makes the large station wagon less suitable for some applications than the equivalent panel van when not more than two passengers accompany the driver. There is greater head room in the panel van which facilitates getting material in and out. With windows all around the panel van, visibility for driving is not substantially less than for the wagon.

Separating occupants from material carried is by a mesh screen as outlined for the medium station wagon.

The rear end arrangement — load carrying space, and overhang behind rear wheels — contribute to the rear end hitting the ground under some circumstances; under-body damage at the rear end often occurs.

The vehicle may be used to tow a trailer within the limits specified under TYPICAL SPECIFICATIONS.

Optional Extra Fittings:

Limited slip differential.

Trailer coupling to drawing No. CAP 129.

Ladder rack to drawing CAP128.

Typical Specifications:

Length Overall - 4800 mm
Width Overall - 1800 mm
Maximum roof load- 65 kg

Wheelbase - 2750 mm
Mass - 1500 kg

Utility

Type Code

Sedan Derivative Type

U0.6



Features:

- Is a utility style vehicle based on the large sedan, powered by a 6 cylinder engine.
- Seat is bench type to accommodate 3 adults.
- 3 speed manual change gearbox.
- Power assisted brakes - front disc, rear drum.
- Radial ply tyres, steel belted.
- Tailgate hinges downward; stops which hold it in a horizontal position can be disconnected to allow it to swing down against the rear end to facilitate loading and unloading.
- Colour - white.

Typical Vehicles:

- Ford Falcon utility
- Holden utility

Number of Persons to be Carried:

Up to a maximum of 3 adults including the driver.

Weight to be Carried:

This vehicle is not primarily a cartage vehicle. Its gross load carrying capacity, including the driver and any passengers, is 0.6 tonnes; for an occasional short run on a good, sealed road a distributed load of 0.7 tonnes could be carried.

When the vehicle is used for towing the static load on the drawbar becomes part of the load being carried; the load in the vehicle must be reduced to allow for it.

Typical Applications:

Being based on the large sedan car and having similar riding characteristics, this type of vehicle is suited to supervisory duties where much of the distance travelled is by the driver alone and without any load, but where there is room for 2 adult passengers and the capacity to carry a total load (including personnel) of 0.6 tonnes when the need arises.

Line Inspectors and Line Supervisors Grade III provide typical examples.

Type Code U0.6 (Cont.)

Special Points to Note:

The springing of this vehicle is more appropriate to a sedan car than a cartage vehicle and with the overhang behind the rear axle, it is possible to load the vehicle in such a manner as to cause the rear end to hit the ground under some conditions, with resultant damage to the underbody. The vehicle has been shown to be generally unsuitable for some external plant functions for example cable jointers.

A device limiting the slip in the differential is available and having this feature in some conditions may avoid the need for the more costly 4 wheel drive vehicle, provided the load on the utility can be kept within the specified limits.

The vehicle may be used to tow a trailer within the limits specified under TYPICAL SPECIFICATIONS.

Optional Extra Fittings:

Limited slip differential.

Tonneau cover.

Ladder rack similar to drawing No. CAP147.

Trailer coupling to drawing No. CAP129.

Typical Specifications:

Length Overall	- 4950 mm.	Wheelbase	- 2900 mm
Width Overall	- 1900 mm	Mass	- 1380 kg
Load capacity (including driver and passengers) - 0.6 tonnes			

Rear body dimensions

internal length at floor level	- 2140 mm
internal width at floor level	- 1540 mm
width between wheel arches	- 1160 mm
floor height above ground	- 600 mm

Towing Capacity:

maximum load on drawbar - 60 kg

maximum gross mass of trailed unit:

if over-ride trailer brakes are fitted - 900 kg

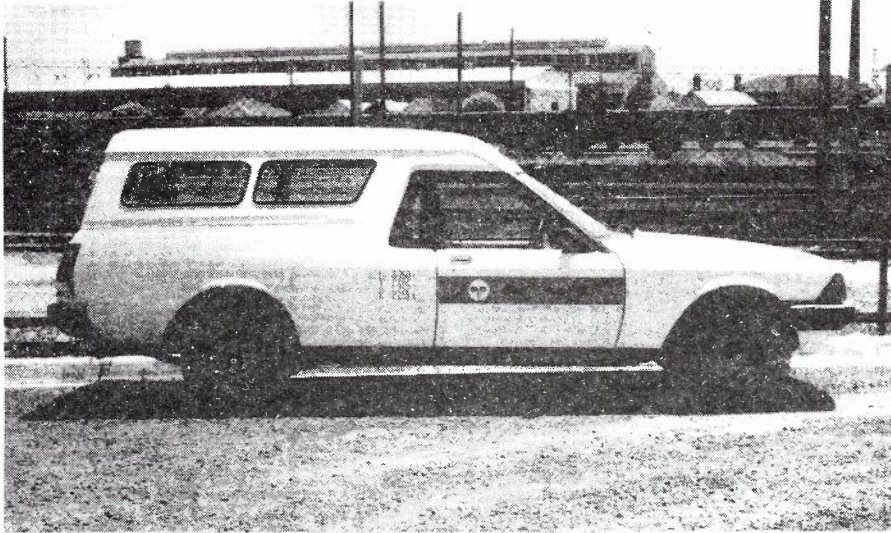
if trailer brakes are not fitted - 550 kg

Panel Van

Type Code

Sedan Derivative Type, 0.6 tonne

PV0.6



Features:

- 2 door panel van, powered by a 6 cylinder engine.
- Two vertically hinged rear doors, each with a fixed window.
- Windows along each side of the rear body.
- A steel mesh safety screen between the driving compartment and rear body.
- Full width bench seat.
- 3 speed manual change gearbox.
- Power assisted brakes – front disc, rear drum.
- Radial ply tyres, steel belted.
- Colour – white.

Typical Vehicles:

- Ford Falcon panel van.

Number of Persons to be Carried:

Maximum of 3, including the driver.

Weight to be Carried:

The total load, including the driver and passengers, should not exceed 600 kg, on a regular basis. For an occasional short run on a good, sealed road, a distributed load of 700 kg could be carried.

Selection of the panel van best suited to the application is more often governed by the space in the rear body than the load capacity. Typical dimensions of the rear body are shown under TYPICAL SPECIFICATIONS.

Typical Applications:

Installation and maintenance of subscriber's equipment where the carrying capacity and the volume of the larger vehicle is necessary and/or the roads are such as to require a vehicle of heavier construction.

Country exchange installation.

Automotive Plant inspectors.

Type Code PV0.6 (Cont.)

Special Points to Note:

The vertically hinged rear doors facilitate access to the rear body but it will be necessary to get into the rear body to reach all parts of it.

It is intended that suitable material storage bins will be fitted to vehicles used on installation and maintenance of subscriber's equipment and on any other vehicles where the work would be helped by having them.

While the material storage bins remain in usable condition they will be transferred from one vehicle to its replacement.

Optional Extra Fittings:

Ladder rack, to drawing No. CAP128.

Trailer coupling to drawing CAP129.

Limited slip differential.

Typical Specifications:

Length Overall	- 4900 mm	Wheelbase	- 2940 mm
Width Overall	- 1900 mm	Mass	- 1520 kg
Load Capacity (including driver and passengers) - 600 kg			

Rear body dimensions:

internal length at floor level	- 2130 mm
internal width at floor level	- 1540 mm
width between wheel arches	- 1160 mm
internal height	- 1000 mm
width of rear door opening	- 1360 mm
height of rear door opening	- 920 mm
height of floor above ground	- 600 mm
cubic capacity	- 2.65 cubic metres

Cable Jointers Utility

Type Code

UJ0.8



Features:

- A 1 tonne capacity utility whose main feature is the arrangement of lids and shelving in the rear body for use of cable jointers.
- Colour - white.

Typical Vehicles:

- Toyota Hi Lux
- Ford Courier
- Holden Rodeo

Number of Persons to be Carried:

A maximum of 3, a driver and 2 passengers.

Weight to be Carried:

The vehicle has a payload of approximately 1 tonne. When allowance is made for the permanent fittings including the ladder rack and 2 persons a load of 0.8-0.9 tonnes can be carried.

Typical Applications:

This vehicle is set up as a base for a mobile cable jointer.

The vehicle is suitable for any task involving one or two persons who require a variety of tools and material which can be appropriately stored in the waterproof rear body.

Optional Extra Fittings:

Double Ladder rack
Trailer coupling
Limited slip differential

Typical Specifications:

Length Overall	- 4350 mm	Wheelbase	- 2600 mm
Overall Width	- 1600 mm	Tare Mass	- 1250 kg
Tray Length	2230 mm		
Tray Width	1570 mm		
Tray Height	650 mm		

Panel Van

Type Code

PV0.7



Features:

- 4 door panel van, powered by a 4 cylinder engine of about 1.6 litres capacity.
- Access to rear by one piece lift up tailgate and kerb side sliding door.
- Windows along each side and rear of van.
- A steel mesh safety screen between the driving compartment and rear body.
- 3 or 4 speed, manual change gearbox, whichever is standard.
- Power assisted brakes – front disc, rear drum.
- Radial ply tyres, steel belted.
- Colour – white.

Typical Vehicles:

- Mitsubishi L300.

Number of Persons to be Carried:

3 – Driver and 2 passengers.

Weight to be Carried:

Selection of the panel van best suited to the application is more often governed by the space in the rear body than the weight which the vehicle can carry.

Typical dimensions of the rear body are shown under TYPICAL SPECIFICATIONS; the total load, including driver and passenger, should not exceed 800 kg.

Typical Applications:

Installation and maintenance of subscriber's equipment, particularly in cities and large country towns where kerbside parking space is often at a premium.

Courier and delivery services and light material cartage. Some outside artisan work.

Type Code PV0.7 (Cont.)

Special Points to Note:

It is intended that suitable material storage bins will be fitted to vehicles used on installation and maintenance of subscriber's equipment, and on any other vehicles where the work would be helped by having them.

While the material storage bins remain in usable condition, they will be transferred from one vehicle to its replacement.

Optional Extra Fittings:

Ladder rack, to Drawing No. CAP149.

Typical Specifications:

Length Overall	- 4000 mm	Wheelbase	- 2200 mm
Width Overall	- 1700 mm	Tare Mass	- 1120 kg
Load capacity (including driver and passenger) - 700 kg			
internal length at floor level	- 2250 mm		
internal width at floor level	- 1500 mm		
width between wheel arches	- 1070 mm		
internal height	- 1200 mm		
width of rear door opening	- 1320 mm		
height of rear door opening	- 1100 mm		
width of side door opening	- 850 mm		
height of side door opening	- 1070 mm		
height of floor above ground	- 610 mm		
cubic capacity	- 4.1 cubic metres		

Cable Jointers' Van

Type Code

PVJO.8



Features:

- A 1 tonne capacity, forward control panel van whose main feature is the arrangement of shelves and other fittings in the load carrying compartment, appropriate to the separation and securing of tools and material used by cable jointers. The arrangement is constructed to drawing CAP134.
- Seating for 3 persons.
- Access to the load compartment is by a sliding door in the kerb side and lift up rear door.
- Windows in the rear door and in the sliding side door.
- A steel mesh safety screen between the driving and load compartments.
- A ladder rack on the roof.
- Allowing for the weight of the fittings and 3 persons a load of 0.8-0.9 tonnes can be carried.
- The vehicle may be used to tow a small load, for example, a trailer mounted water pump.
- Colour - white.

Typical Vehicles:

- Toyota Hi-Ace van
- Holden Shuttle
- Ford Econovan

Number of Persons to be Carried:

A maximum of 3, a driver and 2 passengers.

Weight to be Carried:

The vehicle has a payload of approximately 1 tonne. When allowance is made for the permanent fittings, including the ladder rack, and two persons, a load of 0.8-0.9 tonnes can be carried.

When the vehicle is used for towing, the static load on the drawbar becomes part of the load being carried. The total load must not exceed the gross mass shown on the vehicle.

Type Code

PVJ0.8 (Cont.)

Typical Applications:

The fittings in this vehicle has been developed to make it the base from which a jointer works.
The vehicle is suitable for any task involving one or two persons who require a variety of tools and material which can appropriately be stored in the fittings provided.

Optional Extra Fittings:

Towbar, to drawing No. CAP135.
Double ladder rack to drawing No. CAP149.
Limited slip differential.

Typical Specifications:

Length Overall	- 4350 mm	Wheelbase	- 2350 mm
Width Overall	- 1700 mm	Kerb weight	- 1300 kg
Load capacity (excluding personnel and fittings) - 900 kg.			
Rear body dimensions:			
internal length	- 2700 mm		
internal width	- 1520 mm		
internal height	- 1325 mm		
width of rear door opening	- 1280 mm		
height of rear door opening	- 1245 mm		
width of side door opening	- 980 mm		
height of side door opening	- 1320 mm		
height of floor above ground	- 595 mm		
cubic capacity	- 5.5 cubic metres		

Towing capacity:

Maximum gross mass of trailed unit 0.5 tonnes.

Panel Van

1 tonne capacity

Type Code

PV1



Features:

- A 1 tonne capacity forward control van.
- Seating for 3 persons.
- Access to the load compartment is by a door in the kerbside and lift up rear door.
- Windows along each side of the rear body and in the rear doors.
- A steel mesh safety screen between the driving and load compartments.
- Colour - white.

Typical Vehicles:

- Holden Shuttle
- Toyota Hi-Ace
- Ford Econovan

Number of Persons to be Carried:

A maximum of 3, a driver and 2 passengers.

Weight to be Carried:

The total load, including the driver and passenger, should not exceed 1 tonne.

Typical Applications:

Switchboard installation work, where there is a need for transporting large items or larger amounts of equipment needing protection from the weather.

Optional Extra Fittings:

Ladder racks, to drawing No. CAP149.
Trailer coupling, to drawing No. CAP135.
Limited slip differential.

Type Code
PV1 (Cont.)

Typical Specifications:

Length Overall	- 4350 mm	Wheelbase	- 2350 mm
Width Overall	- 1700 mm	Kerb Weight	- 1300 kg
Load capacity, including personnel - 1000 kg			
Rear body dimensions:			
internal length	- 2700 mm		
internal width	- 1520 mm		
internal height	- 1325 mm		
width of rear door opening	- 128 mm		
height of rear door opening	- 1245 mm		
width of side door opening	- 980 mm		
height of side door opening	- 1320 mm		
height of floor above ground	- 595 mm		
cubic capacity	- 5.5 cubic metres		
Towing Capacity			
Maximum gross mass of trailed unit 0.5 tonne.			

Panel Van

Type Code

PV1.5



Features:

- A 1.5 tonne capacity panel van, built as an integral unit by mass production techniques, not as a chassis and cab with a van body added later.
- The driving compartment is partly over the engine.
- Seating for 3 persons.
- Access to the load compartment is by a door in the kerbside and by side hinged rear doors.
- Windows along each side of the rear body and in the rear doors.
- A steel mesh safety screen between the driving and load compartments.
- The vehicle may be used to tow a small load.
- Colour - white.

Typical Vehicles:

- Daihatsu

Number of Persons to be Carried:

A maximum of 3, a driver and 2 passengers.

Weight to be Carried:

The total load, including driver and passengers, should not exceed 1.5 tonne.

When the vehicle is used for towing, the static load on the drawbar becomes part of the load being carried. The total load must not exceed the gross mass shown on the vehicle.

Typical Applications:

Gas pressure service vehicle for cable protection.

For covered transport where the payload is between 1 and 1.5 tonne or where a covered volume greater than that available in the 1 tonne van is needed.

Optional Extra Fittings:

Drawbar to drawing No. CAP135.

Ladder rack to drawing No. CAP149.

CPAS fittings.

Type Code
PV1.5 (Cont.)

Typical Specifications:

Length Overall - 4700 mm Wheelbase - 2500 mm
Width Overall - 1700 mm Kerb Weight - 1700 kg

Load capacity including driver and passengers - 1.5 tonne.

Rear body dimensions

internal length	- 3100 mm
internal width	- 1520 mm
internal height	- 1300 mm
width of rear door opening	- 1120 mm
height of rear door opening	- 1160 mm
width of side door opening	- 1000 mm
height of side door opening	- 1150 mm
height of floor above ground	- 710 mm
cubic capacity	- 6.2 cubic metres

Towing Capacity

Maximum gross mass of trailed unit 1.5 tonne.

Bus, 12 passenger

Type Code

BUS12



Features:

- A volume production vehicle with seats for at least 12 passengers plus driver.
- Access to passenger seats by a hinged door in the kerbside.
- Lift up rear door at the rear to provide access to a space for luggage and to provide an emergency exit.
- Separate access doors for the driver and front seat passengers.

Typical Vehicles:

- Datsun Urvan
- Toyota Hi-Ace - Commuter

Number of Persons to be Carried:

Up to 12 passengers plus driver.

Typical Applications:

For transport of small parties of up to 12 men. Seats are readily removable, should it be necessary at any time to reduce the number of passengers and carry more equipment.

Special Points to Note:

In the past, three vehicles have been purchased for transporting small parties of up to 12 men. In practice each of these vehicles, the SW15, BUS-8 and BUS10-12, were derivatives of the light commercial panel van. The functions of each of these vehicles can be performed by the BUS12 with the seat configuration altered to suit the task being undertaken.

Optional Extra Fittings:

Drawbar to CAP135.

Typical Specifications:

Length Overall	- 4700 mm	Wheelbase	- 2700 mm
Width Overall	- 1700 mm	Mass	- 1450 kg
Rear Door Opening:			
Width	- 1300 mm		
Height	- 1260 mm		

Bus, 20 passenger

Type Code

BUS20



Features:

- A volume production vehicle with seats for at least 20 passengers plus driver.
- Access to passenger seats by a folding door in the kerbside, and longitudinal aisle.
- To achieve full seating capacity, up to 5 seats may fold down across the aisle.
- Longitudinal seats for up to 3 passengers each side over the rear wheels.
- A door at the rear end to provide access to a space for luggage and to provide an emergency exit.
- A separate access door for the driver.

Typical Vehicles:

- Toyota Coaster Bus.

Number of Persons to be Carried:

Up to 20 passengers plus driver.

Typical Applications:

A passenger carrying vehicle for movement of up to 20 men to or from work sites or other tasks where a larger passenger capacity is required. This bus is the largest size passenger carrying vehicle provided in the standard Telecom vehicle range.

Typical Specifications:

Length Overall - 6095 mm
Width Overall - 1965 mm
Height Overall - 2560 mm

Wheelbase - 3085 mm
Mass - 4450 kg

Utility 0.7 tonne

Type Code TCFO.7



Features:

- Four wheel drive vehicle.
- Flat tray rear body with drop sides.
- Four speed manual transmission with 2 speed auxiliary.
- Petrol engine.
- Colour - white.

Typical Vehicles:

- Toyota Hi-Lux (4x4)
- Holden Rodeo (4x4)
- Mitsubishi Express (4x4)

Number of Persons to be Carried:

Can be used to transport a driver and 2 passengers.

Weight to be Carried:

Up to 1 tonne on road but maximum 0.7 tonne off road.

Typical Applications:

Carriage of supplies used by persons engaged in outside plant work where the load to be carried and/or country traversed are beyond the capacity of a sedan derivative or commercial type vehicle with a limited slip differential.

Optional Extra Fittings:

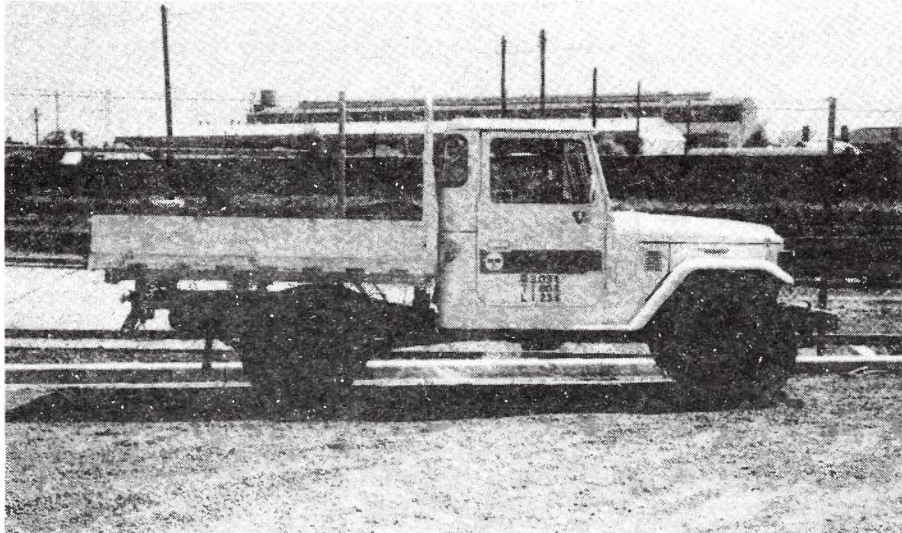
Ladder rack to drawing CAP188.
Trailer coupling to drawing CAP135.
Front mounted winch.

Typical Specifications:

Length Overall	- 4800 mm	Wheelbase	- 2800 mm
Width Overall	- 1860 mm	Tare Mass	- 1200 kg
Tray Length	2350 mm		
Tray Width	1860 mm		
Tray Height	940 mm		

Utility, 1 tonne

Type Code TCF1



Features:

- Four wheel drive vehicle.
- Flat tray rearbody with drop sides.
- Drop sides and rearbody frame of aluminium.
- Manual transmission - three or four speed with a two speed auxiliary gearbox.
- Brakes may be power assisted.
- Diesel engine.
- Colour - white.

Typical Vehicles:

- Toyota Land Cruiser.
- Datsun Patrol.

Number of Persons to be Carried:

Can be used to transport a driver and two passengers.

Weight to be Carried:

Carriage of loads up to 1 tonne.

Typical Applications:

Carriage of supplies used by persons engaged in outside plant work where the load to be carried and/or country traversed are beyond the capacity of TCF0.7.

Special Points to Note:

This vehicle is suitable for carriage of loads where security and protection from the weather are not important factors.

Type Code TCF1 (Cont.)

Optional Extra Fittings:

Ladder rack to drawing No. CAP188.
Trailer coupling to drawing No. CAP135.
Front mounted winch.
Additional fuel tank.

Typical Specifications:

Length Overall - 4950 mm
Width Overall - 1860 mm
Tray Length 2140 mm
Width 1860 mm
Height 990 mm

Wheelbase - 2950 mm
Tare Mass - 1800 kg

Towing Capacity
Maximum load on drawbar 60 kg
Maximum gross mass of trailed unit:
if over-ride brakes are fitted - 900 kg
if trailer brakes are not fitted - 550 kg

Panel Van

Type Code

4 wheel drive

PVF1



Features:

- A four wheel drive panel van powered by a diesel engine.
- 4 speed manual gearbox, with 2 speed auxiliary.
- Colour - white.

Typical Vehicles:

- Toyota Landcruiser HJ47

Number of Persons to be Carried:

Can be used to transport a driver and 2 passengers.

Weight to be Carried:

Carriage of loads up to 1 tonne.

Typical Applications:

Carriage of supplies that require cover from weather over cross country conditions.
CPAS work where 4 wheel drive is required.

Optional Extra Fittings:

Ladder rack to drawing CAP149.
Trailer coupling to drawing CAP135.
Front mounted winch.
Additional Fuel Tank.
CPAS fittings.

Typical Specifications:

Length Overall	- 5000 mm	Wheelbase	- 2950 mm
Width Overall	- 1670 mm	Tare Mass	- 1900 kg
Internal Length	1840 mm		
Internal Width	1620 mm		
Internal Height	1200 mm		
Height of floor from ground	800 mm		

Station Wagon

Type Code

4 wheel drive

WLF



Features:

- A 4-wheel drive, 4 door station wagon, powered by a 6 cylinder diesel engine.
- 4 or 5 speed manual change gearbox, high and low ratios in transfer box, driver selects either 2 or 4 wheel drive.
- Brakes may be power assisted.
- Front seat is bench type to seat 3 people.
- Rear seat folds down to provide a level floor space with access from rear passenger doors and from rear end.
- Rear end doors vertically hinged.
- Colour - white.

Typical Vehicles:

- Toyota Land Cruiser Station Wagon.
- Datsun Patrol.

Number of Persons to be Carried:

Up to a maximum of 6, including the driver.

Weight to be Carried:

The total load, including driver and passengers, should not exceed approximately 1 tonne. With driver and 2 passengers pay load capacity is 0.75 tonnes. When the vehicle is used for towing, the static load on the drawbar becomes part of the load being carried and allowance must be made for it when loading the vehicle.

Typical Applications:

For transport of staff and equipment to work sites not accessible by 2-wheel drive vehicles equipped with limited slip differential. Note the limitation to the volume of equipment which can be accommodated.

Type Code WLF (Cont.)

Special Points to Note:

4-Wheel drive vehicles should only be specified while the need exists for this feature. These vehicles, with their added wearing parts, have a greater potential for breakdown, as well as costing more to buy, operate and maintain, than the equivalent capacity 2-wheel drive vehicle.

Optional Extra Fittings:

Ladder rack, similar to drawing CAP128.
Trailer coupling to drawing No. CAP135.
Extra fuel capacity for increased driving range. Basic capacity 80 litres.
Front mounted winch.

Typical Specifications:

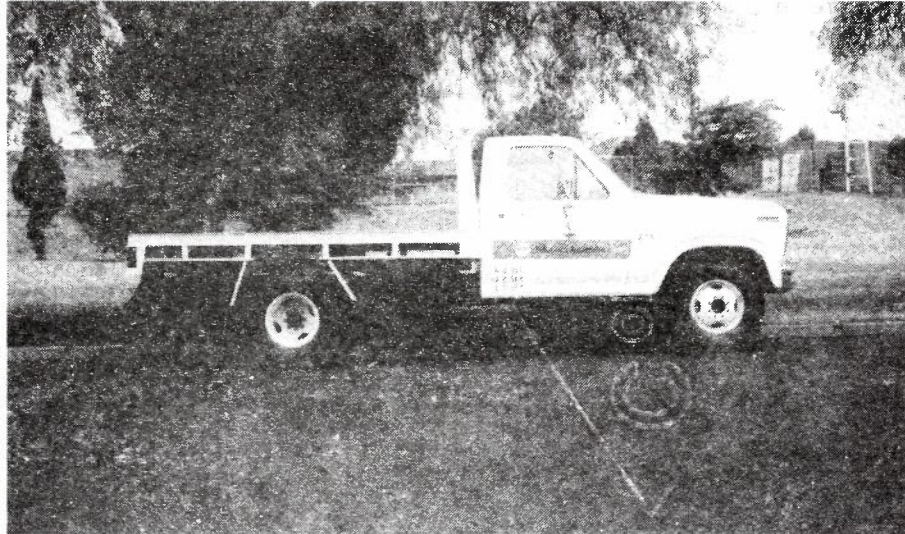
Length Overall	- 4700 mm	Wheelbase	- 2700 mm
Width Overall	- 1750 mm	Tare Mass	- 1950 kg
Towing Capacity			
Maximum gross mass of trailed unit 1 tonne.			

Cartage Truck

Type Code

1.5 tonne, Normal Control

TC1.5



Features:

- A 1.5 tonne capacity normal control, light cartage truck.
- Tray body.
- Colour - white.
- Suitable for carriage of driver and two passengers.

Typical Vehicles:

- Ford F350

Weight to be Carried:

The vehicle has a payload of approximately 1.5 tonne.

Typical Applications:

A vehicle suitable for light cartage and where the space available for access to Buildings etc. is restricted. e.g. Engineering Workshop areas.

Special Points to Note:

This vehicle has a very limited towing capacity and as such will not be fitted with trailer brake equipment.

Optional Extra Fittings:

Trailer coupling to drawing CAP135.
Drop sides and tailgate.

Typical Specifications:

Length Overall - 5550 mm
Width Overall - 2130 mm
Load capacity: 1.5 tonne
Rear tray dimensions:

- Height - 1000 mm
- Length - 2750 mm
- Width - 2130 mm

Wheelbase - 3480 mm

Cartage Truck

Type Code

3 tonne, Forward Control

TC3



Features:

- A 3 tonne capacity, forward control cartage truck.
- Tray body.
- Colour - white.
- Diesel engine.

Typical Vehicles:

- Mitsubishi FK115.
- Isuzu SBR422.
- Ford D0712.

Weight to be Carried:

The vehicle has a payload of approximately 3 tonne.

Typical Applications:

A general purpose cartage truck which is appropriate for much of the material and equipment used by the Commission.

Special Points to Note:

The forward control 3 tonne vehicle permits the larger tray to be fitted. This means that a normal control vehicle of this capacity has been deleted from the standard range.

Optional Extra Fittings:

Trailer coupling to drawing CAP136.
Compressed air trailer brake kit.

Typical Specifications:

Length Overall	- 6800 mm	Wheelbase	- 4200 mm
Width Overall	- 2440 mm		
Load capacity:	3 tonne		
Rear tray dimensions:			
• Height	- 1000 mm		
• Length	- 4570 mm		
• Width	- 2440 mm		
Towing Capacity			
	At least 3.5 tonne when fully loaded.		

Cartage Truck

Type Code

5 tonne, Forward Control

TC5



Features:

- A 5 tonne capacity forward control cartage truck.
- Tray body.
- Colour - white.
- Diesel engine.

Typical Vehicles:

- Hino FD176
- Ford D0912
- Isuzu JCR

Weight to be Carried:

The vehicle has a payload of approximately 5 tonne.

Typical Applications:

A vehicle suitable for short haul work for heavy loads. The forward control arrangement give a greater tray area for carriage of bulky loads.

Optional Extra Fittings:

Trailer coupling to drawing CAP136.
Compressed air trailer brake kit.

Typical Specifications:

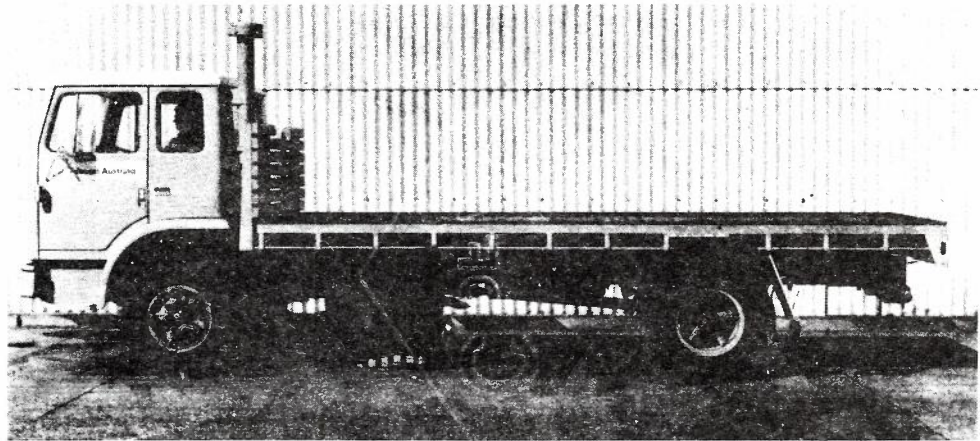
Length Overall	- 7500 mm	Wheelbase	- 4500 mm
Width Overall	- 2440 mm		
Load capacity:	5 tonne		
Rear tray dimensions:			
• Height	- 1000 mm		
• Length	- 5180 mm		
• Width	- 2440 mm		
Towing capacity:			
At least 3.5 tonne when fully loaded.			

Cartage Truck

Type Code

7.5 tonne, Forward Control

TC7.5



Features:

- A 7.5 tonne capacity forward control cartage truck.
- Tray body.
- Colour - white.
- Diesel engine.

Typical Vehicles:

- Ford D1212.
- Isuzu JCR500

Weight to be Carried:

The vehicle has a payload of approximately 7.5 tonne.

Typical Applications:

A cartage truck for conveyance of bulk stores in metropolitan areas and for shorter trips into country locations. The main cartage of bulk stores into country areas is performed by semi-trailer.

Optional Extra Fittings:

Trailer coupling to drawing CAP136.
Compressed air trailer brake kit.

Typical Specifications:

Length Overall	- 8000 mm	Wheelbase	- 4500 mm
Width Overall	- 2440 mm		
Load capacity:	7.5 tonne		
Rear tray dimensions:			
• Height	- 1200 mm		
• Length	- 5640 mm		
• Width	- 2440 mm		
Towing capacity:			
At least 3.5 tonne when fully loaded.			

Cartage Truck

Type Code

12 tonne, Forward Control

TC12



Features:

- A 12 tonne capacity forward control cartage truck.
- Tray body length such that the overall length of the vehicle is the 11 metres proposed as the maximum in the NAASRA recommendations.
- Tandem drive axles.
- Powered by a diesel engine.
- Colour - white.

Typical Vehicles:

- Ford LNT 8000.
- International ACCOF 1950.

Weight to be Carried:

The vehicle has a payload of approximately 12 tonne.
The vehicle has the ability to carry a concentrated load, as opposed to the 12 tonne semi trailer which needs to carry an evenly distributed load.

Typical Applications:

A cartage truck for conveyance of bulk stores in metropolitan and country areas.

Optional Extra Fittings:

Trailer coupling to drawing CAP136.
Compressed air trailer brake kit.

Typical Specifications:

Length Overall	- 9605 mm	Wheelbase	- 5640 mm
Width Overall	- 2440 mm		
Load capacity:	12 tonne		
Rear tray dimensions:			
• Height	- 1350 mm		
• Length	- 6550 mm		
• Width	- 2440 mm		
Towing capacity:			
Maximum gross mass of trailed unit	5.3 tonne.		

Cartage Truck

6 tonne, 4 wheel drive

Type Code

TCF6



Features:

- 4 wheel drive.
- Colour - white.
- Diesel engine.

Typical Vehicles:

- Mercedes Benz LA911

Weight to be Carried:

The vehicle has a payload of approximately 6 tonne.

Typical Applications:

For general cartage work where 4 wheel drive is required. e.g. Taking drums of cable to the site of cable ploughing operations.

Optional Extra Fittings:

Extra fuel tank of approximately 200 litre capacity.

Typical Specifications:

Length Overall - 6519 mm Wheelbase - 3962 mm
Width Overall - 2440 mm
Load capacity: 6 tonne
Rear tray dimensions:
• Height - 1500 mm
• Length - 4700 mm
• Width - 2440 mm
Towing capacity:
Maximum gross mass of trailed unit 3.5 tonne.

Line Truck

Type Code

Single Cabin, 1.5 tonne

TL1.5



Features:

- A vehicle for a line party of 2 or 3 men.
- Tray body.
- Fitted with ladder racks, lockers under the tray and dual rear wheels.
- Colour - white.

Typical Vehicles:

- Ford F350.

Weight to be Carried:

The vehicle has a payload of approximately 1.5 tonne.

Typical Applications:

Generally used as a line party truck in the more sparsely populated country areas where small loads are carried.

Special Points to Note:

This vehicle has a very limited towing capacity and as such will not be fitted with trailer brake equipment.

Optional Extra Fittings:

Trailer coupling to drawing CAP135.

Typical Specifications:

Length Overall - 5700 mm

Width Overall - 2130 mm

Load capacity: 1.5 tonne

Rear tray dimensions:

• Height - 1050 mm

• Length - 2750 mm

• Width - 2130 mm

Towing capacity:

Wheelbase - 3500 mm

Line Truck

Type Code

Single Cabin 3 tonne

TL3



Features:

- A vehicle for a line party of 2 or 3 men.
- Fitted with ladder racks and lockers under the tray, a drawbar and trailer brake kit.
- Tray body.
- Diesel engine.

Typical Vehicles:

- Isuzu SBR422.
- Ford D0711.
- Mitsubishi FK115.

Weight to be Carried:

The vehicle has a payload of approximately 3 tonne.

Typical Applications:

A line party truck for use where the equipment and material to be carried requires a tray size 3660 mm x 2130 mm and has a mass between 1.5 and 3 tonnes. This vehicle is able to tow a trailer of 3.5 tonnes mass (2.5 tonne plant trailer with full load) while the vehicle is carrying a full load.

Optional Extra Fittings:

Trailer coupling to drawing CAP136.
Compressed air trailer brake kit.

Typical Specifications:

Length Overall - 5700 mm

Width Overall - 2130 mm

Load capacity: 3 tonne

Rear tray dimensions:

- Height - 1100 mm
- Length - 3660 mm
- Width - 2130 mm

Towing capacity:

At least 3.5 tonne when fully loaded.

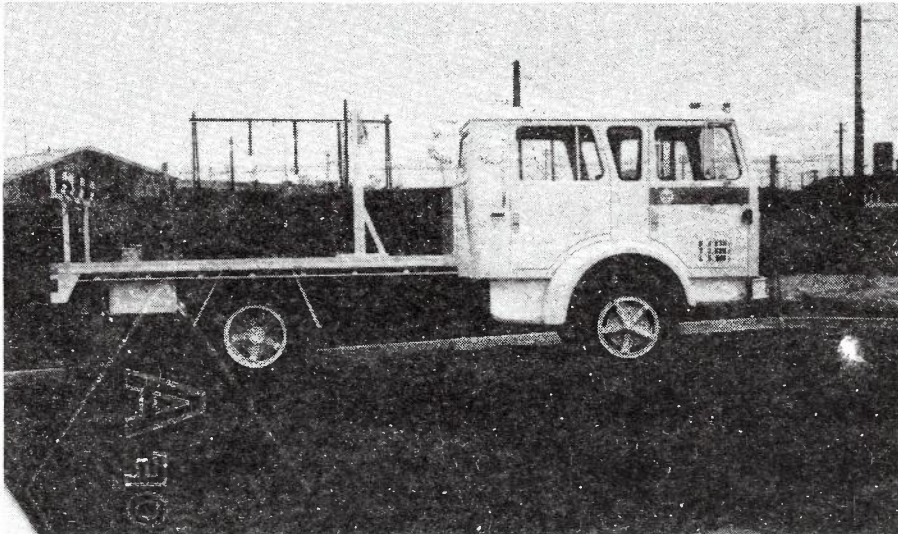
Wheelbase - 3400 mm

Line Party Truck

Type Code

Double Cabin, 3 tonne

TP3



Features:

- A double cabin vehicle for a party of 4 to 6 men.
- Seating provided by two Bench seats in a common cab.
- Fitted with ladder rack, lockers under the tray, a drawbar and trailer brake kit.
- Tray at rear of double cabin.
- Diesel engine.

Typical Vehicles:

- Isuzu SBR422

Weight to be Carried:

The vehicle has a payload of approximately 3 tonne.

Typical Applications:

A line party truck suitable for use by parties of 4 to 6 men. The vehicle is capable of towing a trailer of 3.5 tonnes mass while the vehicle is carrying a full payload.

Optional Extra Fittings:

Trailer coupling to drawing No CAP 136.
Compressed air trailer brake kit.

Typical Specifications:

Length Overall - 6700 mm

Wheelbase - 4200 mm

Width Overall - 2440 mm

Load capacity: 3 tonne

Rear tray dimensions:

• Height - 1000 mm

• Length - 3660 mm

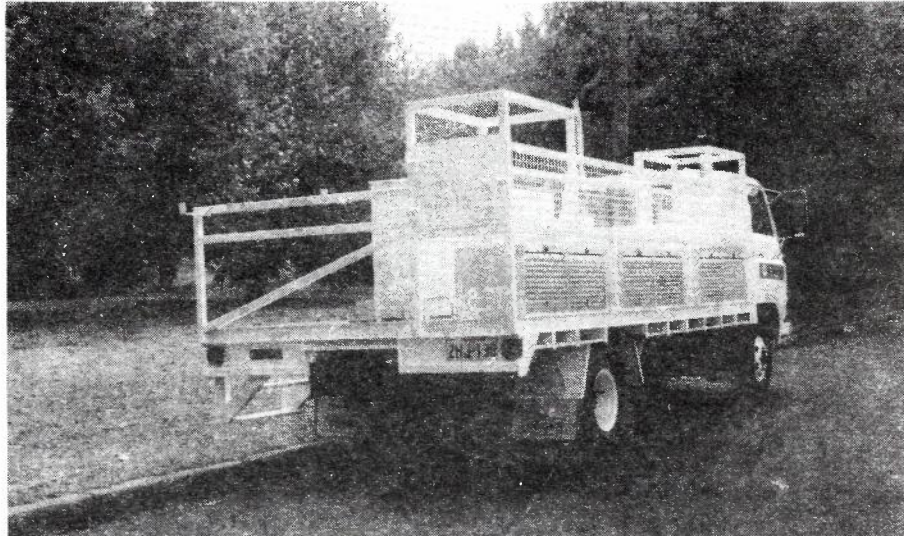
• Width - mm

Towing capacity:

At least 3.5 tonne when fully loaded.

Pit and Pipe Truck

Type Code TLP3



Features:

- A vehicle provided with a pipe carrying tray supported on racks and fitted with lockers above/and below the tray for material storage.
- A 3 tonne capacity forward control truck.
- Colour - white.
- Seating capacity for 3 persons.
- Diesel engine.

Typical Vehicles:

- Isuzu SBR422

Weight to be Carried:

3 tonne carrying capacity for materials used in pit and pipe installation. The mass of the lockers and fixtures must be subtracted from the carrying capacity.

Typical Applications:

A vehicle provided as a support vehicle for teams employed on pit and pipe installation work.

Optional Extra Fittings:

Trailer coupling to drawing CAP136.
Compressed air trailer brake kit.

Typical Specifications:

Length Overall - 7200 mm Wheelbase - 4200 mm
Width Overall - 2440 mm
Rear tray dimensions:
• Height - 1000 mm
• Length - 4870 mm
• Width - 2440 mm
Towing capacity:
Capable of towing a trailer of 3.5 tonne mass when fully loaded.

Double Cabin Pit and Pipe Truck

Type Code TPP3



Features:

- A vehicle provided with a pipe carrying tray and with lockers above/and below the tray for material storage.
- A 3 tonne forward control double cabin truck.
- Colour - white.
- Seating capacity for 6 persons.
- Diesel engine.

Typical Vehicles:

- Isuzu SBR422

Weight to be Carried:

3 tonne carrying capacity for materials used in pit and pipe installation.

Typical Applications:

A vehicle provided as a support vehicle for teams employed on pit and pipe installation work.

Optional Extra Fittings:

Trailer coupling to drawing CAP136.
Compressed air trailer brake kit.

Typical Specifications:

Length Overall - 7900 mm Wheelbase - 4600 mm
Width Overall - 2440 mm
Rear tray dimensions:
• Height - 1000 mm
• Length - 4870 mm
• Width - 2440 mm

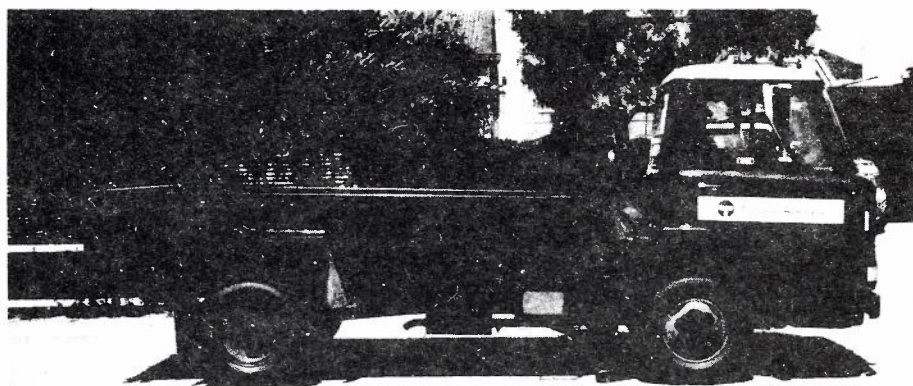
Towing capacity:

Capable of towing a trailer at 3.5 tonne mass when fully loaded.

Tip Truck, 2 tonne

Type Code

TT2



Features:

- A short wheelbase 2 tonne tip truck.
- Drop sides on both sides of tipper body.
- Fitted with telescopic or underbody hoist.

Typical Vehicles:

- Isuzu TLD44

Weight to be Carried:

1½ cubic metre load - weight up to 2 tonne.

Typical Applications:

A short wheelbase unit for clean up operations in built up areas.

Typical Specifications:

Length Overall - 4600 mm
Width Overall - 1900 mm

Wheelbase - 2470 mm

Tip Truck, 5 tonne

Type Code

TT5



Features:

- A short wheelbase 5 tonne tip truck.
- Fitted with telescopic or underbody hoist.
- Diesel engine.

Typical Vehicles:

- Ford D1112.
- Isuzu SBR422.

Cartage Capacity:

3 cubic metre load – weight up to 5 tonne.

Typical Applications:

A short wheelbase unit for operation where larger amounts of spoil are involved or where distance to the tip makes a larger vehicle more economical.

Optional Extra Fittings:

Drop side on near side only.
Compressed air trailer brake kit.
Tow bar to CAP136.

Typical Specifications:

Length Overall - 7100 mm
Width Overall - 2440 mm

Wheelbase - 4250 mm

Tip Truck, 7 tonne

Type Code

TT7



Features:

- A short wheelbase 7 tonne tip truck.
- Fitted with telescopic or underbody hoist.
- Diesel engine.

Typical Vehicles:

- Isuzu JCR500
- Ford D1312

Cartage Capacity:

4.5 cubic metre - weight up to 7 tonne.

Typical Applications:

A forward control, short wheelbase unit for operation where large amounts of spoil are to be moved. It is also a suitable vehicle for use in built-up areas where spoil is loaded directly into it from the excavation.

Optional Extra Fittings:

Compressed air trailer brake kit.
Tow bar to CAP136.

Typical Specifications:

Length Overall - 6100 mm
Width Overall - 2440 mm

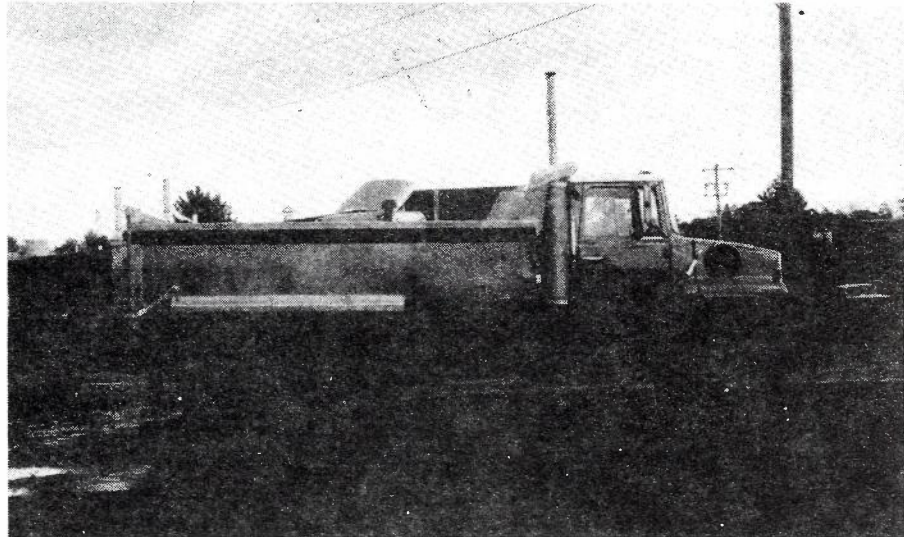
Wheelbase - 3600 mm

Tip Truck, 10 tonne

Type Code

Tip Truck, 10 tonne

TT10



Features:

- Fitted with a drawbar and hand and foot control trailer brake.
- Fitted with telescopic or underbody hoist.
- Fitted with tandem drive rear axles.

Typical Vehicles:

- See special points to note.

Cartage Capacity:

6.5 cubic metres or up to 10 tonne.

Typical Applications:

This vehicle has special application in cleaning up after major cable ploughing operations, for example, where large pieces of rock have to be carted away.

Special Points to Note:

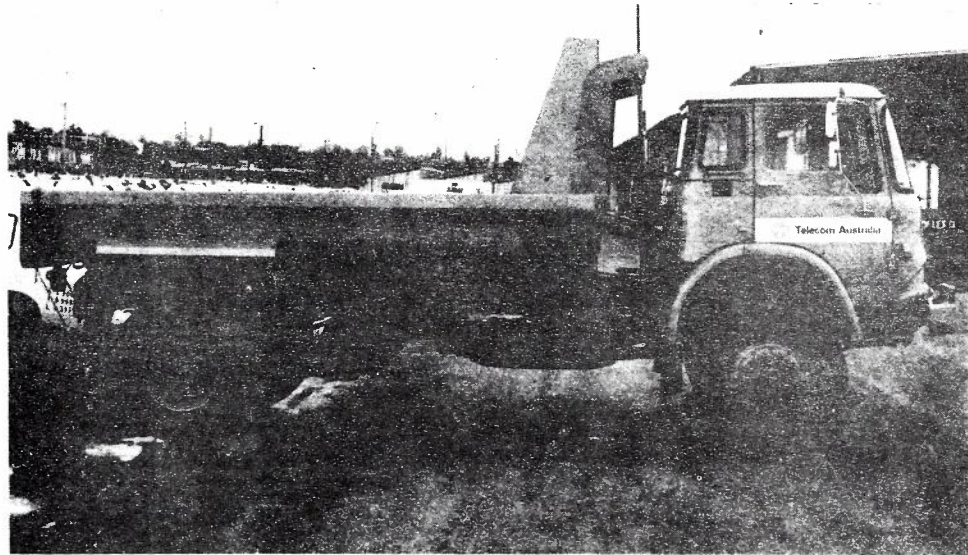
This vehicle will be included in SPECIAL TRUCK tender schedules, when listed in State programmes.

Tip Truck, 6 tonne

Type Code

4 wheel drive

TTF6



Features:

- Fitted with a drawbar and hand and foot control trailer brake.
- Fitted with telescopic or underbody hoist.

Typical Vehicles:

- Mercedes Benz LA911

Cartage Capacity:

4 cubic metre load – weight up to 6 tonnes.

Typical Applications:

A short wheelbase unit for application where larger amounts of spoil are carried and a 4 x 4 drive is required.

Optional Extra Fittings:

Drop side on rear side only.

Typical Specifications:

Length Overall - 5780 mm

Wheelbase - 3120 mm

Width Overall - 2440 mm

Towing capacity:

Maximum gross mass of trailed unit 4 tonne.

Van, 2 tonne

truck chassis

Type Code

TV2



Features:

- Fitted with an enclosed rear body to suit specific applications e.g. test van, service van.

Typical Vehicles:

- Ford F350

Weight to be Carried:

The vehicle has a payload of approximately 2 tonne.

Typical Applications:

The main applications are as mobile testing laboratory, or as a service centre.

Optional Extra Fittings:

Trailer coupling to drawing CAP135.

Typical Specifications:

The optimum vehicle arrangement and size will depend on the specific application as mentioned above.

Tractor Unit and semi trailer

Type Code TUT12

12 tonne payload: (Normal or Forward Control)



Features:

- Powered by a diesel engine.
- Single drive axle.

Typical Vehicles:

- International S2650
- Ford LN7000

Weight to be Carried:

The combination is capable of transporting a 12 tonne distributed load.

Typical Applications:

Distribution of Engineering Supplies from Regional Stores Depots, usually on goods roads at highway speeds.

Typical Specifications:

Length Overall - 12700 mm
Width Overall - 2440 mm

Trailer:

Flat top semi-trailer, 9750 mm long x 2440 mm wide, single, axle, with removable standard gate sides.

Special Points to Note:

If required, space for a truck loading crane be provided between the rear of the cab and the turntable.

Tractor Unit and semi trailer

17/20 tonne

Type Code TUT17/20



Features:

- Powered by a diesel engine.
- Single drive axle - 17 tonne.
- Tandem drive axles - 20 tonne.
- Normal or Forward control.

Typical Vehicles:

- International T2670
- Mack MIR785.
- Kenworth K121. 17 tonne

Weight to be Carried:

With the single drive axle the combination is capable of transporting a 17 tonne distributed load, provided that the load on the drive axles does not exceed 8 tonne. With the tandem drive axles the combination is capable of transporting 20 tonne distributed loads.

Typical Applications:

Transport of General Material, over long distances, usually on good roads at highway speeds.

Typical Specifications:

Length Overall - 15400 mm
Width Overall - 2450 mm

Trailer:

Flat top semi-trailer, 12200 mm long x 2450 mm wide, two axles, with removable standard gate sides.

Tractor Unit and low loader

Type Code TUL15

15 tonne payload



Features:

- Powered by a diesel engine.
- Tandem drive rear axle.

Typical Vehicles:

- Mack Model R 685 RST
- Volvo F86, 6 x 4 R

Weight to be Carried:

The combination is capable of transporting a 15 tonne load.

Typical Applications:

Transport of Mechanical Aid plant items.

Typical Specifications:

Length Overall -15400 mm
Width Overall -2426 mm } approx

Special Points to Note:

A recovery winch may be fitted behind the cab.

Trailer:

Low load semi-trailer, 15 tonne capacity - a unit with 2 rows of 4 wheels. It is not anticipated that an overload permit would be required for this combination. The trailer can be one of three types:

- drop deck for side loading.
- level deck for rear loading.
- drop deck with folding gooseneck for front loading.

Optional Extra Fittings:

Additional 180 litre fuel tank.
Power steering.

Tractor Unit and low loader

30 tonne payload

Type Code TUL30



Features:

- Powered by a diesel engine.
- Tandem drive rear axle.

Typical Vehicles:

- Mack Model TR 786 RS.
- Kenworth Model K 124 CR

Weight to be Carried:

The combination is capable of transporting a 30 tonne load.

Typical Applications:

Transport of Mechanical Aid plant items.

Typical Specifications:

Length Overall - 16200 mm
Width Overall - 2450 mm

Trailer:

Low load semi-trailer, 30 tonne capacity - a unit with 3 rows of 4 wheels, designed to carry a load of 30 tonnes. When attached to a 6 x 4 prime mover, the maximum allowable load is some 20 tonnes (obtained by applying the various State limits as published).

With a 6 x 4 prime mover of 55000 kg GCM, it could transport a load of 30 tonnes with some reserve capacity in the prime mover, in any of the three trailer configurations - level deck, drop deck or folding gooseneck. The actual load will depend on what each State Road Transport Authority is prepared to accept under its permit system.

Tractor Unit and low loader

50 tonne payload

Type Code TUL50



Features:

- . Powered by a diesel engine
- . Tandem drive rear axles

Typical Vehicles:

- . Mack Model R686 RSX
- . Kenworth Model W924 SAR

Weight To Be Carried:

The combination is capable of transporting a 50t load.

Typical Application:

Transport of heavy Mechanical Aids Plant, such as the caterpillar D9 tractors used for cable laying.

Typical Specifications:

Length overall	-	5664*mm	Wheelbase	-	3733*mm
Width overall	-	2420mm			

- * Various Wheelbase and overall length dimensions available.

Type Code
TUL50 (Cont)

Trailer:

Low load semi-trailer, 50 tonnes capacity - a unit consisting of a level deck trailer with a separate articulated dolly, the combined prime mover/dolly/trailer unit having sufficient rows of wheels to spread the 50 tonne load in a way that the load per row does not exceed the maximum allowable for the State. The trailers are required specifically for the Caterpillar D9 tractors used for cable laying. Because of different State regulations, their 50 tonne combinations may not be permitted to cross State boundaries. A special permit is necessary to operate the laden trailer on the road, unladen it may be necessary to disconnect the dolly.